

4-H UPDATE

November 2024

Garnett Office
411 S. Oak
PO Box 423
Garnett KS 66032-0423
Phone: 785-448-6826
FAX: 785.448.6153

Lyndon Office
128 W. 15th
PO Box 400
Lyndon KS 66451
Phone: 785-828-4438
FAX: 785.828.3427

Ottawa Office
1418 S. Main,
Suite 2
Ottawa KS 66067
Phone: 785-229-3520
FAX: 785.229.3527



GREAT THINGS HAPPENING....

Way to go for being so eager to get the ball rolling: congratulations to the following on being the first enrolled! Anderson County; Cayden Davis, L13. Franklin County; Lathan Crawford, PGB Osage County; and Mya Montgomery, BG! Congrats to those, and lets have an amazing New Year! Families are reminded that the red font in the newsletter is a live link.



THANK YOU FOR JUDGING!

Frontier District 4-H would like to thank the adult volunteers who judged PRRFs. Of the 20 clubs, 16 were represented. Each volunteer's dedication to the 4-H youth and the 4-H program is appreciated. Thank you for making it a priority!

AN CO: Jody Newton and Gina Witherspoon, CM; Kim Barnes, Mika Mader, Diane Lizer, Rachel Rockers and Sarah Hardman, L13; Karen Gillespie and Denise King, SNS; Amos, Mary & Krista Cubit and Nicole Firestone, SS.

FR CO: Jennifer McMahan, AR; Jessica & Mark Flory, Hannah Wray, ATB; Alicia Rossi, FOP; Elaine Dunbar, Lisa Meyer, and Kameryn Stinebaugh, PGB; Lara Boyd, Brynn Perry and Erika Perry, RW; Amelia & Aubrey Behrends and Taylor Talgmage, SH.

OS CO: Carolyn and James Lowry, BG; Leslie Arvieux and Kristin Kneisler, LL; Caleb and Janae McNally, MJH; Melissa Cannon, Hope and Jim Koger NO; Sharon Thielen and Pam Whitmer, WW.

AT A GLANCE

- [Calendar](#)
- [Financial Reviews Due](#)
- [Enrollment](#)
- [Setting Project Goals](#)
- [Kansas Clover Classroom](#)
- [Entom. Family Day](#)
- [Anderson Activities](#)
- [Osage Opportunities](#)
- [Franklin Festivities](#)
- [Meet the Staff](#)

OFFICES CLOSED

- November 11th
- November 26th 8 a.m.-1 p.m.
- November 28th-29th
- December 25th-January 1st

4-H Calendar

NOVEMBER

- Nov. 1** Financial Review due
- Nov. 1** AN CO: Achievement RSVP Due
- Nov. 4** OS CO: Achievement Celebration Night
- Nov. 6** FR CO: Achievement Celebration Night
- Nov. 11** All Offices Closed
- Nov. 12** OS CO: Shooting Sports Practice
- Nov. 15** AN CO: Achievement Celebration Night
- Nov. 23-24** KYLF
- Nov. 28-29** All Offices Closed

DECEMBER

- Dec. 1** Returning Members/Volunteers Enrollment Due
- Dec. 1** Club Organization Reports due

JANUARY

- Jan. 10** Senior PRRFs due for SE Area judging

MARCH

- Mar. 1** Jr. Swine Producer Day
- Mar. 3** Blue & Gold Due
- Mar. 17** Blue & Gold Delivered
- Mar. 22** Jr. Meat Goat Producer Day

SAVE THE DATE

Franklin County Fair

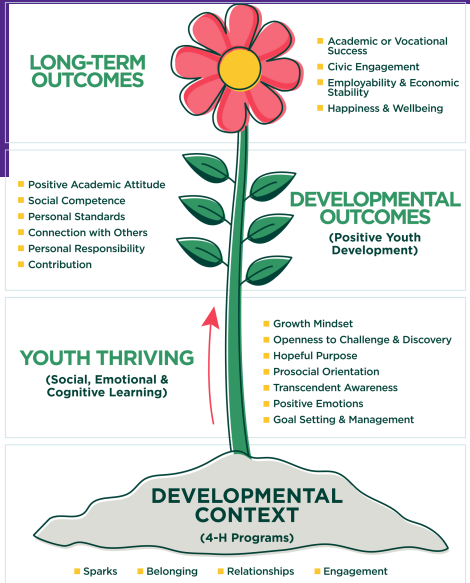
July 14-19, 2025

Osage City Fair

July 16-19, 2025

A Message From Your 4-H

Agent!



4-H Thriving Model



When someone inquires about 4-H, I proudly state that the program is dedicated to nurturing successful adults. Research has shown that 4-H members, as highlighted by Asdasd, are twice as likely to pursue higher education after high school and four times more likely to give back to their communities. These incredible statistics speak to the transformative 4-H can have on our youth.

I want to introduce the 4-H Thrive Model. The 4-H Thriving Model illustrates that youth who participate in 4-H programs will have access to a high-quality development context that can help them thrive. Suppose we consider children as flowers; what must we do to cultivate these flowers? We comprehend precisely how important basic soil health is. For children, these necessities appear as follows:

- A sense of belonging - a place where they perceive security and love.
- Strong, constructive relationships
- Meaningful engagement
- Spark (an excitement for something)

Creating an environment that supports the growth and development of our young adults is essential to our mission in the 4-H program. While some educators refer to this as Maslow's Hierarchy of Needs, the Thriving Model offers more comprehensive terminology to describe the positive outcomes we strive to achieve in youth development.

As a program primarily fueled by volunteers, we all must look at the Thriving Model and ask ourselves, "What can I do to support the growth and development of our youth?" I challenge our volunteers, parents, and senior 4-H members to carefully evaluate this model and reflect on how we can work together to help our young people thrive.

We hope all of our families have a Happy Thanksgiving!

Jess

District Details

Leaders have you...

Review

- Re-enrolled?
- Looked over deadlines & dates?
- Promoted enrollment
- Checked Volunteer enrollment
- Encouraged 4-H members to ask a friend to attend meetings
- Encouraged current 4-H members to review and complete applications for KYLF, Citizenship in Action
- Reminded all 4-H members and parents who are volunteers to enroll via 4-H Online
- Provided officers and clubs leadership updates as soon as possible to the Extension Office

To-Do

- Check mailbox at the Extension Office
- Report from 4-H Council Meetings
- Update Volunteer Renewal information
- Finalcial Review



Financial Review Due

The end of the year financial review for all clubs and project groups must be filled out and turned into the Extension Office by **November 1st**. Clubs or groups needing tax numbers, etc. should contact the Extension Office. Remember, signers on the account or those who have possession of the financial records (or anyone related to them) **CANNOT** review the records and/or sign the audit form. Follow along to the [checklist](#) before turning in. Finally, the only part of the above link that should come to the Extension Office is pages 4-5.



Club Organization Report

The Club Organization Report is due December 1st. This must be filled out so we know your club information. Please turn this in to the Extension Office. If you have questions, please ask.



Member/Volunteer Enrollment

The new 4-H year began October 1st, so it is time for new and returning 4-H members and volunteers to enroll. All returning 4-H members and volunteers should be re-enrolled by December 1st. Projects and/or clubs will need to be added when enrolling. Project years should auto-populate, if not, please call the office. Families are also encouraged to confirm the email address and phone numbers for the family and for each member or volunteer. Direct any questions or concerns to the Extension Office.



Setting Project Goals

After choosing projects, it is important to plan what can be learned and accomplished. What new skills can be gained? Who is going to help along the way? Setting measurable goals will help guide youth through positive 4-H project learning experiences. This resource can help members get started!



Kansas Clover Classroom

The Kansas Clover Classroom is an amazing 4-H project supplemental guide available to 4-H families. Taking photos, designing a cabinet, building rockets, collecting insects, tending to livestock...those activities are part of a much bigger, project-based learning process to prepare youth for the future. Which challenge will you take on?

District Details

Members have you...

Checked off

- Re-Enrolling in 4-H?
- Asked a friend to join
- Signed Up to Present at a Club Meeting?
- Set Project Goals?

Review

- 4-H members: ask a friend to attend meetings
- Encourage current 4-H members to review and complete applications for KYLF, Citizenship in Action
- Remind all 4-H members and parents who are volunteers to enroll via 4-H Online
- Provide officers and clubs leadership updates as soon as possible to the Extension Office



Holiday Hero's

"It is better to give than to receive!" The KVC Kansas Holiday Heroes program is a way for individuals, families or groups to help brighten the holiday season for children in the foster care system. Purchased gifts or cash donations must be dropped off between **December 2nd- 20th** at the Westminster Presbyterian Church, 410 w. 13th St., in Ottawa. Monday-Thursday 8:30 to 12pm & 1 to 5:15pm; Friday 8am-12pm. Note: Drop off donations at the entrance on the north end of building by the fenced playground area. If needed, please call Donna at (785) 242-1824 for support. Please check out the link with shopping list and more information. All patrons from the Frontier District area are served through this office, so a youth from a specific county may be requested. This is a great community service project! Direct all questions to Jessi at jkendell@kvc.org or call 816-541-1133.



National Conservation Photo Contest

Any Frontier District youth or adult may enter the National Conservation Photography Contest. Entry is now open and photos must be emailed in JPEG or TIFF format and an entry form and photo release are also required by **November 15th, 2024**. If questions remain, contact the local Conservation Office: Debbie in AN CO at 785-448-6323; Keri in FR CO at 785-241-7201; Lori in OS CO at 785-828-3458.



Entomology Family Day

The next Entomology Project meeting will be on **Saturday, November 9th** at the Allen County Extension Office beginning at 1:00 p.m. Please bring your pinning boards, pinning supplies and 2 or 3 insects to pin. If you are just starting in this project, I will have pinning set ups available to purchase for \$10. 4-Hers please bring a short talk on an insect you would like to travel and see in another country. Questions: call Vicky at (620)804-9170.

K-State Junior

3.22.25

Event

Join us on Saturday, March 22, 2025 for the biennial K-State Junior Meat Goat Producer Day at the Stanley Stout Center north of the K-State campus in Manhattan. This educational program will be a fun-filled day in which youth, parents, agents, ag teachers, project leaders, and volunteers can increase their knowledge of youth meat goat projects. Presentations will be provided by K-State faculty members, graduate students, former exhibitors, and guest speakers. All ages and skill levels are invited! Participants will receive a K-State Meat Goat Show Guide, t-shirt, and complimentary lunch. Only those who register by the deadline on February 26 will receive a t-shirt. The registration fee is \$20/person before February 26 and \$25/person after the deadline. This is a family event! Anyone attending must register, including all youth, parents, and adults. Registration is **limited to 400** participants, filled on a first come, first serve basis.

Tentative Program

- Friday, March 21
- 5:00-7:00PM *Optional Tour*
Sheep & Meat Goat Center
- Saturday, March 22
- 8:00AM Check-in
- 9:00AM Welcome
- 9:15AM Selection
- 10:00AM Breakout Sessions
 - Nutrition
 - Facilities & Equipment
 - Doe Management & Kidding
- 11:15AM Health & Wellness
- 12:00PM Lunch
- 1:00PM Breakout Sessions
 - Showmanship
 - Reproduction
 - Clipping & Grooming
- 3:15PM Wrap-up
- 3:30PM YQCA Training (*optional*)
- 4:00-6:00PM *Optional Tour*
Sheep & Meat Goat Center

K-State, County Extension Councils, Extension Districts, and U.S. Department of Agriculture Cooperating. All educational programs and materials available without discrimination on the basis of race, color, religion, national origin, sex, age, or disability.

Registration

- \$20/person by February 26
- \$25/person after February 26
- Late registrants will not receive a t-shirt.
- All attendees must register, including youth, parents, & adults.
- No refunds
- Attendance is limited to the first 400 participants to register.



Questions?

Lexie Hayes
adhayes@ksu.edu
785.532.1264

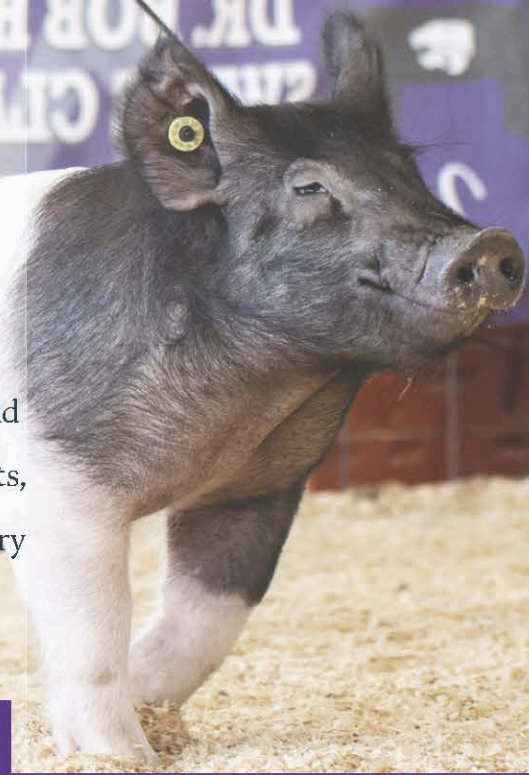
Register Online

<https://commerce.cashnet.com/KSUASIND>

By

February 26

2025 K-State Junior Swine Producer Day



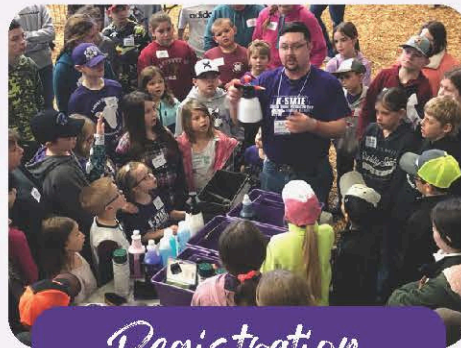
Join us on Saturday, March 1, 2025 for the biennial K-State Junior Swine Producer Day at the Stanley Stout Center in Manhattan. This educational event will be a fun-filled day in which youth, parents, agents, ag teachers, and swine project leaders can increase their knowledge of youth swine projects. Presentations will be provided by K-State faculty members, graduate students, former exhibitors, and guest speakers. All ages and skill levels are invited! Participants will receive a K-State Show Pig Guide, t-shirt, and complimentary lunch. Only those who register by February 5 will receive a t-shirt. The registration fee is \$20/person for those who sign up by the registration deadline, or \$25/person after that date. Registration is limited to 400 attendees, on a first come, first served basis. This is a family event! Anyone attending must register, including all youth and adults.

March 1



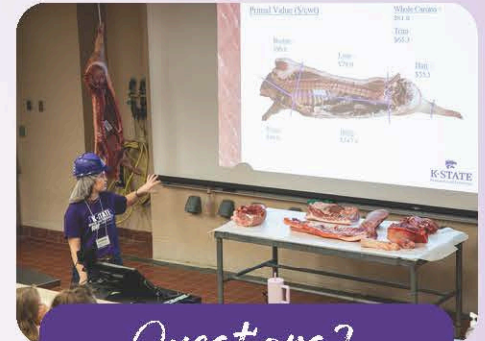
Tentative Schedule

- 8:00AM Registration Opens
- 9:00AM Welcome
- 9:15AM Project Selection
- 10:00AM Breakout Sessions
 - Nutrition, Meats, Facilities & Equipment, Breeds & Ear Notching
- 12:00PM Lunch
- 12:45PM Health
- 1:30PM Breakout Sessions
 - Showmanship, Daily Care & Clipping, Show Day Prep, Resources
- 3:00PM Wrap-up
- 3:30PM YQCA Training (optional)



Registration

- ✔ \$20/person by February 5
- ✔ \$25/person after February 5
- ✔ Late registrants will not receive a t-shirt.
- ✔ All attendees must register, including youth, parents, and adults.
- ✔ No refunds.
- ✔ Attendance is limited to the first 400 participants to register.



Questions?

Joel DeRouchey
jderouch@ksu.edu
785.532.2280

Lexie Hayes
adhayes@ksu.edu
785.532.1264

Register By February 5

Limited Attendance

 **Location**
Stanley Stout Center

 **Register Online**
<https://commerce.cashnet.com/KSUASIND>

K-State, County Extension Councils, Extension Districts, and U.S. Department of Agriculture Cooperating. All educational programs and materials available without discrimination on the basis of race, color, religion, national origin, sex, age, or disability.

K-State Research and Extension and the Department of Animal Sciences & Industry, or their assignees, reserve the right to photograph, record the image and/or voice of participants for future research, educational, or promotional purposes. By attending, you provide consent to the above items and waive all rights to claims for payment or royalties in connection with any use of said images or recordings, unless you notify event organizers you withhold consent, in writing, prior to the event.



Scan Me!

The Elite Livestock Judging Clinic and Contest

Saturday December 7th 2024

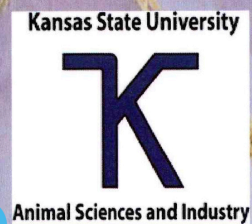
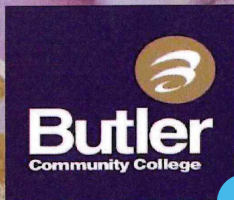
*Leavenworth County Fairgrounds
Tonganoxie, KS*

*Come learn livestock evaluation from Butler County
Community College Livestock Judging Team*

*New this year will be meats identification training
hosted by KSU Meats Science Department*

*Follow us on Facebook for more info
Leavenworth County Livestock Committee*

Leavenwoth County



SCAN ME for 2024 Elite Livestock Judging Clinic and Contest



KANSAS 4-H HORSE PANORAMA

SAVE THE DATE!!

FEBRUARY 22-23, 2025 ROCK SPRINGS

Save the date! Registration information coming soon!!!



Kansas State University Agricultural Experiment Station and Cooperative Extension Service.
K-State Research and Extension is an equal opportunity provider and employer.

K-STATE 
Research and Extension



**Kansas
4-H
T-Shirts
for order!**



Kansas 4-H T-Shirts

There are 2 designs available this year and they can be ordered online through **December 1, 2024** and will be shipped before December 25, 2024.

<https://bit.ly/4HGROWN2024>

The link to the online order form is up on the Kansas 4-H Website under **News and Updates**. You can order either design on any color listed.

Group or club orders will help you minimize shipping fees.

Thanks for supporting this 4-H Youth Leadership Council Fundraiser and showing Kansas 4-H Pride!

K-STATE
Research and Extension



Youth Leadership
Council

District Details for National 4-H Week



Anderson Activities

County Council

November 4th, 7:00 p.m. @
Garnett County Commission
Chamber)

National 4-H Week	All Clubs
Achievement Night Celebration	Lucky 13
County Wide Fun Event	Star Shooting
County Wide Community Service	Cherry Mound
Club Days	Lucky 13
Recognition of 4-H Seniors	Cherry Mound
District Wide Day Camp	Star Shooting
New Member Event	All Clubs
After Fair Pool Party Treats	Seekers Not Slackers
District Activity	Seekers Not Slackers



Achievement Night and Dinner RSVP; Taco 'bout Talent

We are making some exciting changes to our Achievement Night this year!! We are including the New Member Social and a dance. This special event will be held **Nov. 15, 2024**. It will be from 6:30 pm - 10:00 pm at the Community Building. We will start with our meal, present awards, welcome our new members, and then dance the rest of the night away!! **Please join us!! We are looking forward to a fun evening!!**



4-H Council Meeting

Our meeting will be held **November 4, 2024 at 7 pm**. We will be meeting next door to the Extension Office in the Co. Comm. Chambers. We will be electing officers, handing out B&G packets, among other topics. Be sure to attend and represent your club as there must be a representative from each club at every meeting in order for the club to be on track to receive a purple seal at year's end. The next Club Leader's meeting and Council meeting will be January 13, 2025.



Capturing the Moment

Throughout the new 4-H year, please take pictures of 4-H activities throughout the year and email them to Jeanette at jlstineb@ksu.edu. This will provide a variety of photos to use for our end of the year slide show at Achievement Night.



Enrollment Fee Paid by Fairboard

The Anderson County Fairboard has graciously agreed to pay for every Anderson County 4-H member's enrollment fee again this year. Club leaders and the Ext. Office have the code. **Thank You AN CO Fairboard!!** Your support of the 4-H members is greatly appreciated! All members should be enrolled by **Dec. 1st**.



Attention for 2025 Fair

The fair board is asking 4-H & FFA members to distinguish which organization they will choose to show in for the 2025 Fair by **Dec. 1, 2024**. The fair board encourages all youth to participate in both organizations and doesn't restrict involvement. This is a reminder that you must attend 40% of each organization's meetings to sell livestock in the auction. If you choose to show FFA please tell your FFA instructor by Dec. 1st. At that time a list will be handed to the fair board listing members showing FFA. If you don't distinguish you will be showing FFA and are enrolled in the 4-H Program (enrollment by **Dec. 1**; all project enrollment final by May 1), it will be assumed that you are showing under 4-H. - Jessica Flory

Osage Opportunities

County Council

December TBA, 7:00 p.m. @
Lyndon Extension Office

County Wide Fundraiser	MJH
Club Day	NO
Achievement Night Celebration	WW
District Wide Day Camp	Ambassadors
Council By-laws & National 4-H Week	BG
District Wide Event	LL

Save The Date:

Osage City Fair:

July 16-19, 2025

Blue & Gold:

Due March 3rd, Delivered week of
March 17th

Achievement Night

The Osage County Achievement Celebration will be **November 4th** at 6:30 p.m. at the Lyndon High School Cafeteria. Dinner will be served starting at 6 p.m. Please RSVP by **October 31st**, if you plan on eating. Here is the [RSVP Link](#). Come and enjoy the evening as we celebrate Osage County 4-H Members, volunteers and friends! Contact Jo at the Lyndon Office with questions.

Shooting Sports Fall Schedule

Members must be eight years old by **January 1st**, to participate. Some disciplines have other age restrictions. Shooters **MUST** attend the first date of discipline for safety training, review of 4-H code of conduct and to complete all paperwork. Direct any questions to Marcie at 785-640-2270 or mkquaney@gmail.com.

Upcoming Fall Schedule

Small Bore Rifle ages 8 - 18

Sunday, **Nov 3** --at 4:00 pm

15303 S. Osage Rd

Burlingame, KS

We have current openings for Instructors in Archery and Pistol, as well as for County Coordinator. Please reach out to Dustin Eichen or Marcie Quaney if interested.

Send Thank You

Thank you to all 4-H members who sent articles and pictures to the Osage County Herald-Chronicle and Osage County Online for National 4-H Week! This was an ideal time to promote 4-H and with the help of OCHC and Osage County Online an infinite number of families were reached. Citizen State Bank let us put up our Join 4-H and Club Banners in their yard during National 4-H Week. Please include them when writing your thank you notes. They are a great supporter of Osage County 4-H. Now would be a great time for 4-H members, families and clubs/groups to write a thank you note to each of the businesses expressing appreciation for the time and effort put forth during National 4-H Week! Mailing addresses are as follows:

Osage County Herald-Chronicle PO Box 266 Osage City, KS 66523

Osage County Online PO Box 62 Lyndon KS 66451

Citizen's State Bank PO Box 430 8 Lyndon, Ks 66451

Franklin Festivities

County Council

November 25, 7:00 p.m. @
Commission Chambers, 1418 S.
Main, in Ottawa (down the hall
from the Extension Office)

Club Day	RR
District Wide Day Camp	BGG & AR
Livestock Buyer Appreciation	SH
National 4-H Week Marketing	FOP & SS
Achievement Night Celebrations	RW
District Wide Event	PGB
Community Service & Fair Goody Plates	AT

Save the Date

Franklin County Fair;
July 14-19, 2025

Achievement Night

The Franklin County Achievement Celebration will be held **November 6th** at the Ottawa Municipal Auditorium, 301 S. Hickory, at 6:30 p.m. Come and enjoy the evening as we celebrate Franklin County 4-H members and volunteers and their successes!

Jr. Medallions

At the annual Franklin County 4-H Achievement Celebration, medallions are awarded to junior and intermediate members showing excellence in a project through a PRRFs. Two awards were given in most project areas for the junior level and one in the intermediate level (a pin is awarded to the top PRRF). Medallions were sponsored by Adelle Higbie Family; Mara & Jax Drieling; S.H.A.F.F. 4-H club. Thank you for your support!

Fair Checks

Please remember to cash your fair premium checks **ASAP** so the Fair Board Treasurer can finalize the 2024 fair books. There has been an extension, you have until **November 15th**, and then all that haven't not been picked up will be donated back to the fair board!

Come pick up PRRF's and things

Any items not picked up at the Achievement Celebration are available from the club leader or are in the Extension Office. State Fair Items are as well, in the office if you haven't already picked up. Please remember, the office is closed Noon-1:00 p.m.

Thank you to our sponsors!

Please send a thank you to our sponsors for their generous donations. Send a thank you to our T-Shirt sponsor, Patriots Bank, at 1508 US-59, Princeton, KS 66078

Handy Links!

Please follow the links for more information

[4-H Policy](#)

The current KSRE and 4-H practices cover the new requirements and are now included as a reference in the policy.

[Electronic Treasurers Book](#)

An electronic version of the Treasurer's Book is available for any club or group to use. Located at the bottom of page on the club resource's page!

[Helpful Resources](#)

Here are some resources to help guide you in projects, or any national curriculum that might be helpful!

[Raffle Policy and Guidelines](#)

Any Extension unit-affiliated group (e.g. 4-H club, 4-H project group, etc.) wanting to conduct a raffle must first fill out and submit an application.

[Frontier District Website](#)

This is our website that holds lots of great information!

[Frontier District Facebook](#)

Follow us on Facebook for updated information!

[Kansas 4-H Website](#)

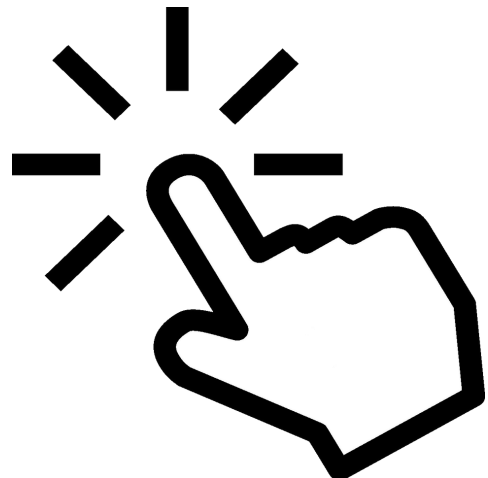
This is the Kansas 4-H website and is an excellent resource. Information about state events, project materials and the state 4-H newsletter is available.

[District Wide Project Leaders](#)

A list of District-wide projects and leaders is available to Frontier District 4-H members.

[Disabilities Accommodations Request Form](#)

The Americans with Disabilities Act (ADA) requires persons with disabilities be provided "reasonable" accommodations and prohibits discrimination against persons with disabilities. Accommodations are generally considered reasonable if they don't change the fundamental nature of the program or alter the essential criteria for participation. Accommodations meeting these standards should typically be provided. Reasonable accommodations are determined through an interactive process between the community member and local and State 4-H Offices. It is essential for the Accommodation Request Form to be filled out FIRST at the local level in collaboration with a local Extension Professional to launch a formal accommodations process. Because it can take time to plan for accommodations, KSRE requests this form be submitted no later than two weeks prior to the event/activity. Submitting a request on shorter notice may reduce and/or limit any ability to implement accommodations.



Meet the Staff

Rebecca McFarland

District Director
Family and Community Wellness
Agent
Ottawa Office
785-229-3520
rmcfarla@ksu.edu

Janae McNally

District Agent
Adult Development and Aging
and Family Resource Management
Lyndon Office
785-828-4438
jmcnally@ksu.edu

Ryan Schaub

District Agent
Crop Production and Farm
Management
Garnett Office
785-448-6826
reschaub@ksu.edu

Rod Schaub

District Agent
Livestock Production
Lyndon Office
785-828-4438
rschaub@ksu.edu

Chelsea Richmond

District Agent
Nutrition, Food Safety and Health
Garnett Office
785-448-6826
crichmon@ksu.edu

Lauren Gammill

District Agent
Horticulture and Natural Resources
Ottawa Office
785-229-3520
laurengammill@ksu.edu

Jessica Flory

District Agent
4-H Youth Development
Ottawa Office
785-229-3520
jrflory@ksu.edu

Jo Hetrick-Anstaett

4-H Program Manager
Lyndon Office
785-828-4438
janstaett@ksu.edu

Josie Medlen

4-H Program Manager
Ottawa Office
785-229-3520
josie03@ksu.edu

Jeanette Stinebaugh

4-H Program Manager
Garnett Office
785-448-6826
jlstineb@ksu.edu

Kierstyn Blaufuss

Office Professional
Ottawa Office
785-229-3520
kierstynb@ksu.edu

Liz Drennan

Office Professional
Garnett Office
785-448-6826
edrennan@ksu.edu

Anita Sobba

Nutrition Educator - Kansas SNAP-ED
Program
Garnett Office
785-448-6826
anitasobba@ksu.edu

Kris Wallace

Nutrition Educator - SNAP-ED
Ottawa Office
785-229-3520
krwall@ksu.edu

Janaya Reed

Financial Manager and Office
Professional
Lyndon Office
785-828-4438
jlhamlin@ksu.edu

Carol Engle

Communications & Marketing
Manager
Ottawa Office
785-229-3520
carolengle@ksu.edu