

# 4-H UPDATE

January 2025

Garnett Office  
411 S. Oak  
PO Box 423  
Garnett KS 66032-0423  
Phone: 785-448-6826  
FAX: 785.448.6153

Lyndon Office  
128 W. 15th  
PO Box 400  
Lyndon KS 66451  
Phone: 785-828-4438  
FAX: 785.828.3427

Ottawa Office  
1418 S. Main,  
Suite 2  
Ottawa KS 66067  
Phone: 785-229-3520  
FAX: 785.229.3527

## GREAT THINGS HAPPENING....

On Monday, December 23rd we have 17 youth and adults come to our Leadership 101 hosted in Osage County. They learned different traits to take back into their clubs and communities to share their leadership skills. We are proud to have young leader such as them in our district, leading the way "To Make The Best Better"! Be sure to sign up for Anderson & Franklins Leadership 101 so you don't miss out!

## CIA

**What:** Would you like to have more influence in laws and rules that affect your life? Then you'll want to go to Kansas 4-H Citizenship in Action! This two day event is sponsored by the State 4-H Youth Leadership Council. The purpose of the event is for Kansas youth to learn how the state legislative process works and how their voice and participation in decision-making can make a difference in their local communities. The legislative visit will not only familiarize youth with the capitol building, but will also show them how they can affect the legislative process.

**When:** February 16-17, 2025

**Where:** Topeka KS - Hotel Topeka at City Center (formerly Capitol Plaza)

**Who:** Youth 13-18 years old by January 1 of the current year

**Registration:** [Here](#)

**Registration Deadline:** January 24, 2025

## AT A GLANCE

- [Calendar](#)
- [Message from 4-H Agent](#)
- [Organizational Reports Due](#)
- [Enrollment](#)
- [Setting Project Goals](#)
- [Kansas Clover Classroom](#)
- [Rock Springs Camp](#)
- [Scholarships](#)
- [Dog Judge and Leaders](#)
- [Entom. Family Day](#)
- [Horse Project Updates](#)
- [District Clubs](#)
- [Anderson Activities](#)
- [Osage Opportunities](#)
- [Franklin Festivities](#)
- [Meet the Staff](#)

## OFFICES CLOSED

- December 25th-January 1st
- January 20th
- February 17th
- May 26th

# 4-H Calendar

## JANUARY

**Jan. 4** 4-H Day @ KSU Women's Basketball

**Jan. 10** Senior PRRFs due for SE Area judging

**Jan. 13** AN CO. Leadership Night

**Jan 27** FR CO Leadership Night

## FEBRUARY

**Feb. 10** Kansas 4-H Horse Panorama

**Feb. 16-17** Citizenship In Action

**Feb. 22** District Club Days

## MARCH

**Mar. 1** Jr. Swine Producer Day

**Mar. 1** 4-H State Scholarships Due

**Mar. 2** FR CO. Beef Weigh-In

**Mar. 3** Blue & Gold Due

**Week of Mar. 17** Blue & Gold Delivered

**Mar. 21** AN CO. Scholarships Due

**Mar. 22** Jr. Meat Goat Producer Day

**Mar. 26** OS CO. Beef Weigh-In

**Mar. 30** AN CO. Beef Weigh-In

## APRIL

**Apr. 20** Last Day to Order Market Beef DNA Envelopes for Nominations

**Apr. 23** FR CO. Small Animal Weigh-In

## MAY

**May 1.** Market Beef Nominations Due

**May. 6** OS CO. Small Animal Weigh-In

**May. 7** AN CO. Small Animal Weigh-In

## JUNE

**June. 5** Last Day to Order Small Animal DNA Envelopes for Nominations

**June. 15** Small Animal Nominations Due

## SAVE THE DATE

**Franklin County Fair**

July 14-19, 2025

**Osage City Fair**

July 16-19, 2025

**Overbrook Fair**

August 5-8

# A Message From Your 4-H Agent!

## *Resiliency in Action: Weathering Winter Challenges*



Winter on a farm brings its own set of unpredictable challenges, but for our family, it's also a season that fosters resilience, teamwork, and determination—qualities we hold dear as part of our 4-H journey.

My husband and I run a pig farm with 20-30 sows. Farming is not just our livelihood; it's a way of life that teaches lessons you can't find in a book. I grew up on a dairy farm, where my parents instilled the values of hard work and perseverance in everything we did. Whether it was milking cows in subzero temperatures or preparing for a 4-H show, those experiences built the grit that I carry with me today.

Now, as parents, we want to pass those same lessons on to our children. Evelyn, our oldest, and Jase, our middle child, show pigs through 4-H and the National Junior Swine Association (NJSA). Preparing for a January show means cold nights in the barn, but I couldn't be prouder of how they step up. Every evening, they faithfully do their chores, whether it's feeding the pigs, cleaning pens, or helping us prepare for the show.

When we're all home, the barn becomes a family hub. All five of us—my husband, our three kids, and I—pitch in, working together to tackle whatever needs to be done. It's not always easy, especially when winter throws us challenges like snowstorms or freezing water lines, but those moments teach our kids the value of teamwork and persistence.

Winter reminds us that the lessons we learn in 4-H extend beyond the show ring. It's about adapting to what life throws at you and finding strength in yourself and your family. These are the qualities that will carry our children far, both in 4-H and in life.

As we gear up for the NJSA show, I'm reminded once again why we do this. It's not just about the ribbons or trophies—it's about the memories we create and the resilience we build as a family.



# District Details

## Leaders have you...

### Review

- Turned in your organization Reports and Financial Reviews?
- Re-enrolled?
- Looked over deadlines & dates?
- Promoted enrollment
- Checked Volunteer enrollment
- Encouraged 4-H members to ask a friend to attend meetings
- Encouraged current 4-H members to review and complete applications for Citizenship in Action
- Reminded all 4-H members and parents who are volunteers to enroll via 4-H Online
- Provided officers and clubs leadership updates as soon as possible to the Extension Office

### To-Do

- Check mailbox at the Extension Office
- Report from 4-H Council Meetings
- Update Volunteer Renewal information
- Organizational Report



## Club Organization Report

The **Club Organization Report** was due **December 1st**. This must be filled out so we know your club information. Please turn this in to the Extension Office. If you have questions, please ask.



## Animal Science Newsletter

Did you know that there is a monthly newsletter written by the KSU Animal Science Department. Be sure to check it out, as they write important topics, such as camps coming up, upcoming events, topics you might need to know in the barn. Check out the link above to find information you might need to know!



## Setting Project Goals

After choosing projects, it is important to plan what can be learned and accomplished. What new skills can be gained? Who is going to help along the way? Setting measurable goals will help guide youth through positive 4-H project learning experiences. This resource can help members get started!



## Kansas Clover Classroom

The Kansas Clover Classroom is an amazing 4-H project supplemental guide available to 4-H families. Taking photos, designing a cabinet, building rockets, collecting insects, tending to livestock...those activities are part of a much bigger, project-based learning process to prepare youth for the future. Which challenge will you take on?



## Rock Springs Camp 2025

Summer Camp 2025 registration opened **November 15, 2025!** This includes half week, full week, LIT (Leader in Training) and Counselor in Training (CIT) sessions. Early bird registration rate (10% discount) ends **December 31st**. There are eight different traditional 4-H camp dates in June and July. We recommend Session two! There are also three CIT dates in June and July and two LIT dates in June. They have also added a two night mini camp for rising 1st-3rd graders, as well as a Specialty camp for rising 6th-9th graders. Transportation schedules are being finalized. Check out which date and/or camp works best for you! Camperships (scholarships) are available for all levels!

# District Details

Members have you...

Checked off

- Re-Enrolling in 4-H?
- Asked a friend to join
- Signed Up to Present at a Club Meeting?
- Set Project Goals?
- RSVPed for Leadership Event

Review

- 4-H members: ask a friend to attend meetings
- Encourage current 4-H members to review and complete applications for Citizenship in Action
- Remind all 4-H members and parents who are volunteers to enroll via 4-H Online
- Provide officers and clubs leadership updates as soon as possible to the Extension Office



## Dog Judge and Leader Training

The 2025 Kansas 4-H Dog Judges Training and Recertification will be held in Hutchinson at the Hutchinson Kennel Club **January 18-19, 2025**. Participants can become trained and certified to judge the four dog phases of showmanship, obedience, agility and rally obedience in the Dog Care and Training Project. This training is appropriate for both leaders as well as potential judges.

Registration is due **January 3, 2025**. Cost to participate is \$120, which includes training materials, certification and lunch both days of training. Be sure to ask your Extension office about scholarships!



## Scholarships

The Kansas 4-H Scholarships are now available. There is the 4-H scholarship, and the Vanier Family Scholarship! They are all due **March 1st**. The new scholarship process has combined the State 4-H Scholarships and the Vanier Family Scholarship Program (VFSP) applications together. We hope that this encourages more applicants to pursue both of these scholarship opportunities. Please review the instructions to see which scholarships you are eligible for. These are great opportunities, and we highly recommend looking into these!



## Entomology Meeting

Hope all of your families have a very blessed and Merry Christmas. We are going to focus on labels to go on the insects and identification at the January project meeting. It will be on **Saturday, January 11th** at the Allen County Extension Office. From 1:00 to 2:00 p.m I want to work with any of the 4-H members that are changing from Option A to Option B. Then from 2:00 to 3:30 p.m. we will work on ID and labels for everyone. If you have not gotten the labels template from me please bring a zip drive for me to transfer the template to. Please bring insects you need help identifying. If you are going to give a talk for 4-H Club Day, please bring it and practice at the meeting - it can be on any project. Remember, if the weather in our area is bad, check your emails to see if the meeting is called off. Please do not travel in bad weather for a project meeting. Questions: call Vicky at (620)804-9170.

# District Details

## Member/Volunteer Enrollment

The new 4-H year began **October 1st**, so it is time for new and returning 4-H members and volunteers to enroll. All returning 4-H members and volunteers should be re-enrolled by December 1st. Projects and/or clubs will need to be added when enrolling. Project years should auto-populate, if not, please call the office. Families are also encouraged to confirm the email address and phone numbers for the family and for each member or volunteer. Direct any questions or concerns to the Extension Office.

- [Click here to enroll](#)
- Create an account
- Select your participation type
- Choose your county & club
- Select your projects (remember, once you have enrolled, if you need to add more, message your Extension Office.)
- Review consent forms, there are more this year!
- Enter member information
- Click submit!



## Horse Project Updates

The [Kansas 4-H Horse ID Certificate \(P1039\)](#) has been updated for the 2025 4-H program year. Beginning with the 2025 4-H program year, please use the new form and destroy previously used 4-H Horse ID Certificates. As a reminder, to properly identify your horse, complete the 4-H Horse ID Certificate, have your Extension Agent sign it and copy it. A COPY of the Horse ID Certificate is kept on file in the Extension Office and the 4-H Horse member maintains the ORIGINAL certificate. The original certificate is presented by the 4-H member to show staff for check-in at the local 4-H horse shows. Beginning in 2025, registration papers WILL NOT be accepted to identify horses for the 4-H Horse project. An [example of the Horse ID Certificate](#) is available online



## District Club Days

District Club Day will be **February 22, 2025**, at Central Heights, 3521 Ellis Road, Richmond. Youth may participate in group and/or individual events (ex: model meeting, gavel games, choir, demonstration, project talk, reading, career exploration, etc.). Regardless of what a member decides to do, the guidelines should be reviewed. Other helpful resources are the score sheets and the Communication Fact Sheets. All Frontier District 4-H members are encouraged to participate in the eventful day! A registration link will be available **January 27th** through **February 7th** at 8:00 a.m. Participants registering as individuals will need to register separately. Groups, duos and ensembles will need to be registered by ONE person. Use this link! Be sure to have the oldest participant's name and age. Each 4-H club will be assigned a room and will be responsible for making sure someone is in charge of the room at all times. Those clubs sharing a room should contact each other to make arrangements for monitoring responsibilities. Those assignments will be sent to club leaders. Direct all questions to the Extension Office. Regional Club Day information will be available in next month's newsletter.

# K-State Junior

# 3.22.25

## Event

Join us on Saturday, March 22, 2025 for the biennial K-State Junior Meat Goat Producer Day at the Stanley Stout Center north of the K-State campus in Manhattan. This educational program will be a fun-filled day in which youth, parents, agents, ag teachers, project leaders, and volunteers can increase their knowledge of youth meat goat projects. Presentations will be provided by K-State faculty members, graduate students, former exhibitors, and guest speakers. All ages and skill levels are invited! Participants will receive a K-State Meat Goat Show Guide, t-shirt, and complimentary lunch. Only those who register by the deadline on February 26 will receive a t-shirt. The registration fee is \$20/person before February 26 and \$25/person after the deadline. This is a family event! Anyone attending must register, including all youth, parents, and adults. Registration is **limited to 400** participants, filled on a first come, first serve basis.

## Tentative Program

Friday, March 21  
 5:00-7:00PM *Optional Tour*  
 Sheep & Meat Goat Center  
 Saturday, March 22  
 8:00AM Check-in  
 9:00AM Welcome  
 9:15AM Selection  
 10:00AM Breakout Sessions

- Nutrition
- Facilities & Equipment
- Doe Management & Kidding

11:15AM Health & Wellness  
 12:00PM Lunch  
 1:00PM Breakout Sessions

- Showmanship
- Reproduction
- Clipping & Grooming

3:15PM Wrap-up  
 3:30PM YQCA Training (*optional*)  
 4:00-6:00PM *Optional Tour*  
 Sheep & Meat Goat Center

K-State, County Extension Councils, Extension Districts, and U.S. Department of Agriculture Cooperating. All educational programs and materials available without discrimination on the basis of race, color, religion, national origin, sex, age, or disability.

## Registration

- 💰 \$20/person by February 26
- 💰 \$25/person after February 26
- 💰 Late registrants will not receive a t-shirt.
- 💰 All attendees must register, including youth, parents, & adults.
- 💰 No refunds
- 💰 Attendance is limited to the first 400 participants to register.



## Questions?

Lexie Hayes  
 adhaves@ksu.edu  
 785.532.1264

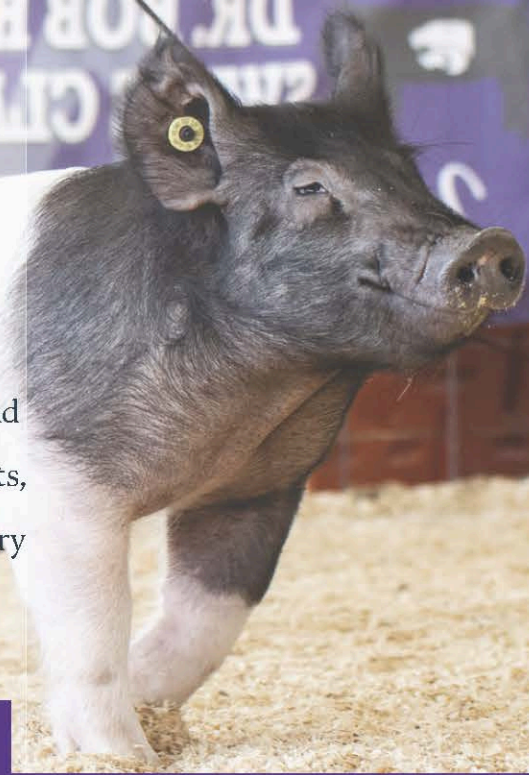
## Register Online

<https://commerce.cashnet.com/KSUASIND>

By

February 26

# 2025 K-State Junior Swine Producer Day



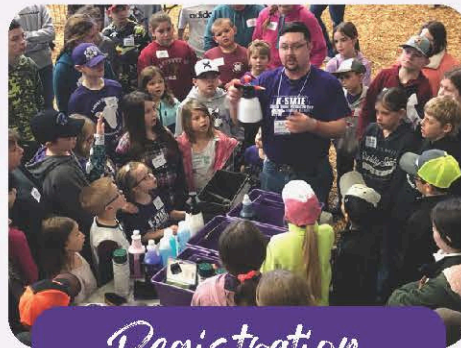
Join us on Saturday, March 1, 2025 for the biennial K-State Junior Swine Producer Day at the Stanley Stout Center in Manhattan. This educational event will be a fun-filled day in which youth, parents, agents, ag teachers, and swine project leaders can increase their knowledge of youth swine projects. Presentations will be provided by K-State faculty members, graduate students, former exhibitors, and guest speakers. All ages and skill levels are invited! Participants will receive a K-State Show Pig Guide, t-shirt, and complimentary lunch. Only those who register by February 5 will receive a t-shirt. The registration fee is \$20/person for those who sign up by the registration deadline, or \$25/person after that date. Registration is limited to 400 attendees, on a first come, first served basis. This is a family event! Anyone attending must register, including all youth and adults.

## March 1



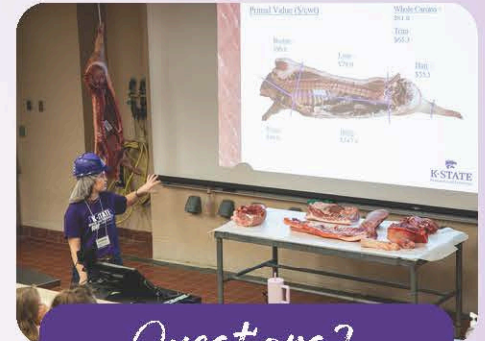
### Tentative Schedule

- 8:00AM Registration Opens
- 9:00AM Welcome
- 9:15AM Project Selection
- 10:00AM Breakout Sessions
  - Nutrition, Meats, Facilities & Equipment, Breeds & Ear Notching
- 12:00PM Lunch
- 12:45PM Health
- 1:30PM Breakout Sessions
  - Showmanship, Daily Care & Clipping, Show Day Prep, Resources
- 3:00PM Wrap-up
- 3:30PM YQCA Training (optional)



### Registration

- ✔ \$20/person by February 5
- ✔ \$25/person after February 5
- ✔ Late registrants will not receive a t-shirt.
- ✔ All attendees must register, including youth, parents, and adults.
- ✔ No refunds.
- ✔ Attendance is limited to the first 400 participants to register.



### Questions?

Joel DeRouchey  
jderouch@ksu.edu  
785.532.2280

Lexie Hayes  
adhayes@ksu.edu  
785.532.1264

## Register By February 5

*\*Limited Attendance\**

 **Location**  
Stanley Stout Center

 **Register Online**  
<https://commerce.cashnet.com/KSUASIND>

K-State, County Extension Councils, Extension Districts, and U.S. Department of Agriculture Cooperating. All educational programs and materials available without discrimination on the basis of race, color, religion, national origin, sex, age, or disability.

K-State Research and Extension and the Department of Animal Sciences & Industry, or their assignees, reserve the right to photograph, record the image and/or voice of participants for future research, educational, or promotional purposes. By attending, you provide consent to the above items and waive all rights to claims for payment or royalties in connection with any use of said images or recordings, unless you notify event organizers you withhold consent, in writing, prior to the event.



Scan Me!



Highly pathogenic avian influenza, or HPAI, is a rapidly spreading viral disease that can infect many types of birds. Avian influenza, often called avian flu or bird flu, can be common, but some strains are highly pathogenic, which means they are more deadly. Introduced by migrating wild birds, HPAI can spread through spring migration and affect all domestic poultry – small and backyard flocks as well as commercial industries.

Poultry with HPAI do not survive the illness. Vaccines for HPAI are not readily available.

### Signs of Avian Influenza

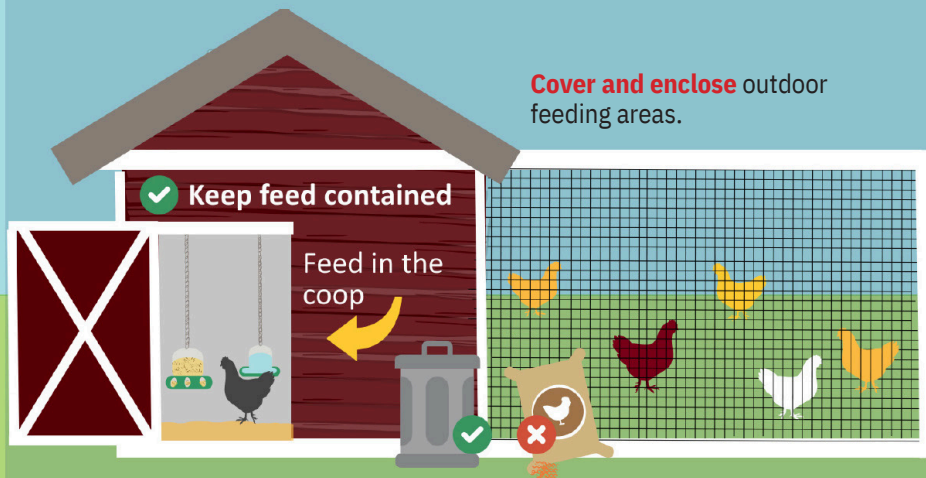
- Coughing and sneezing
- Difficulty breathing
- Extreme depression
- Lack of energy
- Decrease in feed or water intake
- Swelling or purple discoloration of head, eyelids, comb, wattle and legs
- Decrease in egg production
- Sudden unexplained death

Biosecurity is your best option to prevent HPAI from entering your small or backyard poultry flock.

### Here is what you can do:

## Protect Your Small Flock from Avian Influenza

**1** **Avoid** attracting wild birds and waterfowl to your home or farm. Song birds, sparrows, starlings, etc. are **low risk**.



- Clean up** feed spills.
- Reduce** puddles and standing water.
- Avoid** visiting ponds and streams, especially with pets.
- Do not** move birds from farm to farm.
- Isolate** new birds.



**2** **Limit** or **halt** travel with your birds to sales, shows and swaps. Ensure you have clean hands, clothes, and footwear before handling your birds if you attend events. **Do not** allow others to handle your birds.



**3** **Limit** your birds' visitors. If someone must visit your birds: discuss where they have been. Have them wash their hands and wear clean clothes and footwear.





# KANSAS 4-H HORSE PANORAMA

## SAVE THE DATE!!

### FEBRUARY 22-23, 2025 ROCK SPRINGS

Save the date! Registration  
information coming soon!!!



Kansas State University Agricultural Experiment Station and Cooperative Extension Service.  
K-State Research and Extension is an equal opportunity provider and employer.

**K-STATE**  
Research and Extension



When: February 22-23, 2025

[DRAFT Schedule](#)

[Register Here](#)

[Hippology, Horse Bowl, Presentation Rules](#)

[Virtual Rules](#)

Registration includes housing and meals at Rock Springs as well as contest fees. Everyone who attends MUST register. All youth must have an adult chaperone.

Cost:

Youth Participant- Full time \$155 (February 22-23)

Youth Participant with Friday check-in \$185.00

Youth Participant Saturday only \$130

Adult Full-time \$130

Adult with Friday check-in \$170

Virtual \$0

Where: Rock Springs

Who: 4-H Members ages 9-18 and adult volunteers. Horse Panorama is a compilation of various contests related to the Horse Project. Contests include: quiz bowl, hippology, public speaking presentations, photography and educational posters.

**Saturday, January 4, 2025, 4:00 PM**

**K-STATE**

Research and Extension



# Kansas 4-H Day with K-State Women's Basketball

**Opponent: Texas Tech Red Raiders**

**\$25: Ticket, Voucher (\$10 Concessions), & Shirt**  
**\$15: Ticket & Voucher (\$10 Concessions)**



## How to Get Tickets?

- ✓ Register! Use the QR Code or the link below!
- ✓ Pick up ticket packages - Location TBA closer to event. (1/4/2024) 2:30pm - 3:30pm
- ✓ Doors open for the general public (1/04/2024, 3:00pm)
- ✓ Tip-off! (1/04/24, 4:00 pm)

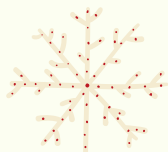
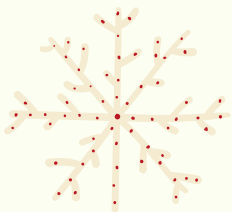


Kansas State University Agricultural Experiment Station and Cooperative Extension Service  
K-State Research and Extension is an equal opportunity provider and employer. Resource: <https://www.apa.org/topics/resilience>



**Online registration for this event will be due December 13, 2024. No paper registrations will be accepted. To register, go to:**

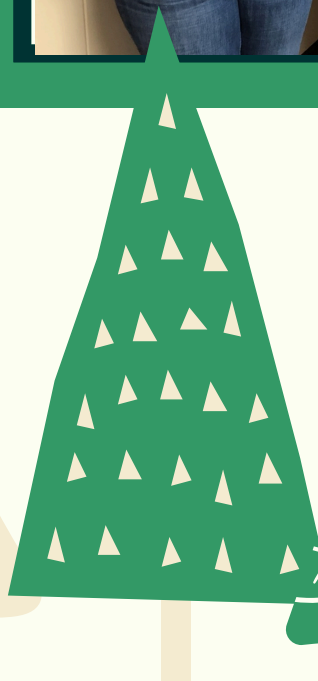
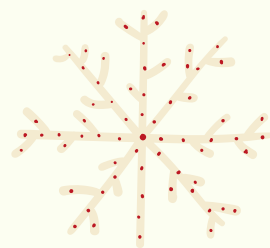
**<https://tinyurl.com/4HDaywiththeCats2025>**



MAY YOUR DAYS BE

# *Merry and Bright*

*Happy Holidays from your  
4-H Staff- Jessica, Jo,  
Jeanette, and Josie*





*Thank You...*

...for all of the donations. Because of your generosity, we were able to make **182** Cuddle Kits for CASA!

*The Osage County 4-H Ambassadors*

# Anderson Activities

## County Council Committees

National 4-H Week	All Clubs
Achievement Night Celebration	Lucky 13
County Wide Fun Event	Star Shooting
County Wide Community Service	Cherry Mound
Club Days	Lucky 13
Recognition of 4-H Seniors	Cherry Mound
District Wide Day Camp	Star Shooting
New Member Event	All Clubs
After Fair Pool Party Treats	Seekers Not Slackers
District Activity	Seekers Not Slackers

## 4-H Council Meeting

Our next meeting will be **January 13, 2025 from 6-7:30 pm at the Community Building on the fair grounds.** It will be in conjunction with a **county wide Leadership event.** The Leadership event will be open to anyone of any age interested in honing their leadership skills. **Please see the next page for the flyer. Don't forget to RSVP by Jan. 7th!** Be sure to attend and represent your club as there must be a leader and youth representative from each club at every meeting in order for the club to be on track to receive a purple seal at year's end.

## Animal Weigh-In and Tagging Dates

Beef: **March 30, 2025, 2-4 p.m. at Garnett weigh station**

Small Animal: **May 7, 2025, 5-7 p.m. at the fair grounds**

**Note:** Per Fair board rules, all tagging for county fair will be done at weigh-in only. If missed, the animal will be ineligible to be shown at the Anderson County Fair.

## Cloverbuds

We will begin having monthly Cloverbud meetings for 5 and 6 year old youth enrolled in the Cloverbud program. If your child isn't enrolled, please add them to 4-H Online. Our first meeting will be **January 9, 2025 from 4:15-5:15 pm.** We will meet in the Extension Office. If you have questions, please contact the office.

## Fair t-shirt designs

The Fair Board will choose a theme for the fair at their January 6, 2025 meeting. Once that is done, the theme will be sent out and the Extension Office will accept t-shirt designs based on the theme. **Designs will be due January 31, 2025 in the office. Watch for the email that tells you the chosen theme.**

## District Club Days

As mentioned on a previous page of the newsletter, District Club Days will be **February 22, 2025 at Central Heights.** Start planning this month so you have time to prepare adequately. If you need any type of assistance, please contact the Extension Office.

# ANDERSON COUNTY

**JANUARY 13**

**2025**



## Leadership 101 Course

We are excited to be offering a leadership night in the Frontier Extension District on **January 13, 2025 from 6-7:30 pm**, where we will be focusing on practicing different leadership skills in the areas of character and teamwork. As Simon Sinek once said, 'Leadership is not about being in charge. It's about taking care of those in your charge.' A strong leader understands the importance of continuous skill-building. **All ages are encouraged to attend our event. Dinner will be served.** If you plan to attend, please use the link or QR code below to RSVP by January 7, 2025. We hope to see you there!



**PLEASE RSVP BY  
JAN. 7, 2025**

<https://forms.office.com/Pages/ResponsePage.aspx?id=cfqi2X3Wtky1QQbMqoAT-5UKJ3o-GIxAI5ndcCEuEh9UNUlyN1JNVjM3QktKQlhFM05LUVNBROMyRy4u>

OR

RSVP for Leadership Event on  
January 13, 2025



**It will be held at the Community Building on the Fair  
Grounds**

# Osage Opportunities

## County Council

February 24th @ 7 p.m.  
Lyndon Extension Office

County Wide Fundraiser	MJH
Club Day	NO
Achievement Night Celebration	WW
District Wide Day Camp	Ambassadors
Council By-laws & National 4-H Week	BG
District Wide Event	LL

## Save The Date:

### Osage City Fair:

July 16-19, 2025

### Overbrook Fair:

August 5-8

### Blue & Gold:

Due March 3rd, Delivered week of March 17th



## Shooting Sports Schedule

Air Rifle Schedule:

Sundays at 3 p.m. January 19th through February 9th at the Osage City Fair Pavillion.

Members must be eight years old by January 1st, to participate. Some disciplines have other age restrictions. Shooters MUST attend the first date of discipline for safety training, review of 4-H code of conduct and to complete all paperwork. Direct any questions to Marcie at 785-640-2270 or [mkquaney@gmail.com](mailto:mkquaney@gmail.com).



## Spring Tagging and Weigh In

Beef: **March 26th, 2025**; 4-6 p.m. at the Osage City Fairgrounds. This will include all cattle (breeding, market and bucket calf). Bucket calves may be tagged at either tagging date.

Small Animal: **May 6th, 2025**, 4-6 p.m. at the Osage City Fairgrounds. Small animals include: bucket calf, and market and breeding swine, sheep and goat.

Youth enrolled in Breeding beef, Dairy, Market and Breeding Meat Goat, Sheep, and Swine must own and have possession of animals by **May 15th**.

Youth enrolled in the Rabbit and Poultry project must own/have possession of animals by **June 15th**.

A bucket calf must have been born **Jan. 1st-May 1st** of the current 4-H year.



## Blue & Gold Fundraiser

We are selling Blue and Gold Meats (bacon, sausage and chicken strips) as a fundraiser again this year. This is a great fundraiser as most of the county is familiar with the products. Proceeds will be divided between 4-H Council and the 4-H Clubs. Packets will be handed out to club leaders. All orders and money is due to the Extension Office by **March 3, 2025**. Delivery is expected the week of **March 17, 2025**. The exact date will be announced closer to that time.



# Franklin Festivities

## County Council

November 25, 7:00 p.m. @  
Commission Chambers, 1418 S.  
Main, in Ottawa (down the hall  
from the Extension Office)

Club Day	RR
District Wide Day Camp	BGG & AR
Livestock Buyer Appreciation	SH
National 4-H Week Marketing	FOP & SS
Achievement Night Celebrations	RW
District Wide Event	PGB
Community Service & Fair Goody Plates	AT

## Save the Date

Franklin County Fair;  
**July 14-19, 2025**

## Livestock Weigh-In & Tagging

Beef: **March 2nd, 2025**; 4-6 p.m. at Cottonwood Animal Hospital, 3161 K-68, in Ottawa. We will only have EID Tags this year.

Small Animal - **April 23th, 2025**; 4:00-6:00 p.m. at the Fair grounds, 220 W. 17th, in Ottawa. Small animal includes Swine, Sheep, and Goat. We will only be using EID Tags.

This year we only will be using ED tags for all animals. They will cost \$3.00 a tag, and you must pay for tags at weigh in. There will no longer be invoices, so please have exact change or check available at weigh-in.

## Youth Entrepreneurship Challenge

This February 27th, 2025 at Ottawa University is a Youth Entrepreneurship Challenge. You will give a formal presentation of your tradeshow. 1st place will receive \$1000, 2nd receiving \$750 and 3rd receiving \$500. Registration closes on January 31st. Please email [josie03@ksu.edu](mailto:josie03@ksu.edu) for the flyer!

## Leadership Event

Come and expand your Leadership Skills! All Franklin County 4-H members and adults are encouraged to attend this Leadership Event. This will take the place of our **January 27th** Council Meeting. We will be serving a pizza dinner starting at 6:00 p.m., with the Leadership Program starting at 6:30 p.m. We should wrap up between 7:30 and 8 p.m. This is a great opportunity to work on Leadership skills with other 4-H members from around the county! Please RSVP by January **20th** [here](#). If you have any questions, please reach out to the office.

## Shooting Sports Practice

Franklin County Shooting Sports will only offer archery for the upcoming year. Practices will begin sometime this April. They are looking for other discipline leaders! Practice dates will be listed when available and will also be sent to those who are enrolled in the project. Direct any and all questions to Becky Cain at [FranklinCountyShootingSports@gmail.com](mailto:FranklinCountyShootingSports@gmail.com) as she is the current program coordinator.

# FRANKLIN COUNTY

**JANUARY 27**

**2025**



## Leadership 101 Course

We are excited to be offering a leadership night in the Frontier Extension District on **January 27, 2025 from 6:00-7:30 pm**, where we will be focusing on practicing different leadership skills in the areas of character and teamwork. As Simon Sinek once said, 'Leadership is not about being in charge. It's about taking care of those in your charge.' A strong leader understands the importance of continuous skill-building. **All ages are encouraged to attend our event. A pizza dinner will be served.** If you plan to attend, please use the link or QR code below to RSVP by January 20, 2025. We hope to see you there!



**PLEASE  
RSVP BY  
JANUARY  
20TH, 2025**

OR

Franklin County Leadership Event



**It will be held at the Commissioners Chambers!**

# Handy Links!

Please follow the links for more information

## [4-H Policy](#)

The current KSRE and 4-H practices cover the new requirements and are now included as a reference in the policy.

## [Electronic Treasurers Book](#)

An electronic version of the Treasurer's Book is available for any club or group to use. Located at the bottom of page on the club resource's page!

## [Helpful Resources](#)

Here are some resources to help guide you in projects, or any national curriculum that might be helpful!

## [Raffle Policy and Guidelines](#)

Any Extension unit-affiliated group (e.g. 4-H club, 4-H project group, etc.) wanting to conduct a raffle must first fill out and submit an application.

## [Frontier District Website](#)

This is our website that holds lots of great information!

## [Frontier District Facebook](#)

Follow us on Facebook for updated information!

## [Kansas 4-H Website](#)

This is the Kansas 4-H website and is an excellent resource. Information about state events, project materials and the state 4-H newsletter is available.

## [District Wide Project Leaders](#)

A list of District-wide projects and leaders is available to Frontier District 4-H members.

## [Disabilities Accommodations Request Form](#)

The Americans with Disabilities Act (ADA) requires persons with disabilities be provided "reasonable" accommodations and prohibits discrimination against persons with disabilities. Accommodations are generally considered reasonable if they don't change the fundamental nature of the program or alter the essential criteria for participation. Accommodations meeting these standards should typically be provided. Reasonable accommodations are determined through an interactive process between the community member and local and State 4-H Offices. It is essential for the Accommodation Request Form to be filled out FIRST at the local level in collaboration with a local Extension Professional to launch a formal accommodations process. Because it can take time to plan for accommodations, KSRE requests this form be submitted no later than two weeks prior to the event/activity. Submitting a request on shorter notice may reduce and/or limit any ability to implement accommodations.



# Meet the Staff

**Rebecca McFarland**

District Director  
Family and Community Wellness  
Agent  
Ottawa Office  
785-229-3520  
[rmcfarla@ksu.edu](mailto:rmcfarla@ksu.edu)

**Janae McNally**

District Agent  
Adult Development and Aging  
and Family Resource Management  
Lyndon Office  
785-828-4438  
[jmcnally@ksu.edu](mailto:jmcnally@ksu.edu)

**Ryan Schaub**

District Agent  
Crop Production and Farm  
Management  
Garnett Office  
785-448-6826  
[reschaub@ksu.edu](mailto:reschaub@ksu.edu)

**Rod Schaub**

District Agent  
Livestock Production  
Lyndon Office  
785-828-4438  
[rschaub@ksu.edu](mailto:rschaub@ksu.edu)

**Chelsea Richmond**

District Agent  
Nutrition, Food Safety and Health  
Garnett Office  
785-448-6826  
[crichmon@ksu.edu](mailto:crichmon@ksu.edu)

**Lauren Gammill**

District Agent  
Horticulture and Natural Resources  
Ottawa Office  
785-229-3520  
[laurengammill@ksu.edu](mailto:laurengammill@ksu.edu)

**Jessica Flory**

District Agent  
4-H Youth Development  
Ottawa Office  
785-229-3520  
[jrflory@ksu.edu](mailto:jrflory@ksu.edu)

**Jo Hetrick-Anstaett**

4-H Program Manager  
Lyndon Office  
785-828-4438  
[janstaett@ksu.edu](mailto:janstaett@ksu.edu)

**Josie Medlen**

4-H Program Manager  
Ottawa Office  
785-229-3520  
[josie03@ksu.edu](mailto:josie03@ksu.edu)

**Jeanette Stinebaugh**

4-H Program Manager  
Garnett Office  
785-448-6826  
[jlstineb@ksu.edu](mailto:jlstineb@ksu.edu)

**Kierstyn Blaufuss**

Office Professional  
Ottawa Office  
785-229-3520  
[kierstynb@ksu.edu](mailto:kierstynb@ksu.edu)

**Liz Drennan**

Office Professional  
Garnett Office  
785-448-6826  
[edrennan@ksu.edu](mailto:edrennan@ksu.edu)

**Anita Sobba**

Nutrition Educator - Kansas SNAP-ED  
Program  
Garnett Office  
785-448-6826  
[anitasobba@ksu.edu](mailto:anitasobba@ksu.edu)

**Kris Wallace**

Nutrition Educator - SNAP-ED  
Ottawa Office  
785-229-3520  
[krwall@ksu.edu](mailto:krwall@ksu.edu)

**Janaya Reed**

Financial Manager and Office  
Professional  
Lyndon Office  
785-828-4438  
[jlhamlin@ksu.edu](mailto:jlhamlin@ksu.edu)

**Carol Engle**

Communications & Marketing  
Manager  
Ottawa Office  
785-229-3520  
[carolengle@ksu.edu](mailto:carolengle@ksu.edu)