

4-H UPDATE

February 2025

Garnett Office
411 S. Oak
PO Box 423
Garnett KS 66032-0423
Phone: 785-448-6826
FAX: 785.448.6153

Lyndon Office
128 W. 15th
PO Box 400
Lyndon KS 66451
Phone: 785-828-4438
FAX: 785.828.3427

Ottawa Office
1418 S. Main,
Suite 2
Ottawa KS 66067
Phone: 785-229-3520
FAX: 785.229.3527

GREAT THINGS HAPPENING....

Did you know that one of our very own Frontier District; Franklin County 4-H members is currently participating in a Food Network's Kids Baking Championship for Season 13? Piper Lowe, member of the Acorn Rustler 4-H Club has the chance of a life time to compete in the Kids baking championship. The first episode aired January 6th. You can watch more episodes every Monday at 7:00 p.m. The finale is March 3rd at 8:00 p.m. For more information follow the link to make sure you catch up. We are so excited to see where she goes with this, good luck Piper!



Another great thing, we had a team compete at the National FCS Bowl in Texas this month. The 4-H Family and Consumer Sciences (FCS) National Championship is a competition for 4-H members to compete against each other in a variety of events. The events include a fashion revue, skill-a-thon, and consumer decision making. The Team consisted of Amelia Behrends; SH, Nora Taylor; SH, Tanis Normile; RW. They received 10th place in consumer decision making! We are so proud to have them representing the state of Kansas! Way to go girls.

AT A GLANCE

- [Calendar](#)
- [Message from 4-H Agent](#)
- [Organizational Reports Due](#)
- [Enrollment](#)
- [Setting Project Goals](#)
- [Kansas Clover Classroom](#)
- [Rock Springs Camp](#)
- [Scholarships](#)
- [Entomology](#)
- [Horse Project Updates](#)
- [District Clubs](#)
- [Anderson Activities](#)
- [Osage Opportunities](#)
- [Franklin Festivities](#)
- [Meet the Staff](#)

OFFICES CLOSED

- February 17th
- May 26th
- June 19th
- July 4th

4-H Calendar

FEBRUARY

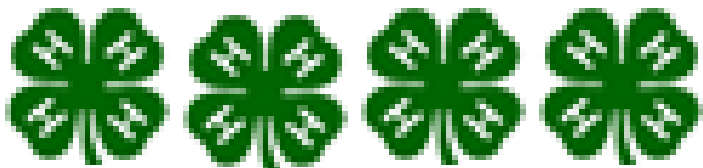
Feb. Club Day Registration Due
Feb. 10 Kansas 4-H Horse Panorama
Feb. 16-17 Citizenship In Action
Feb. 22 District Club Days

MARCH

Mar. 1 Jr. Swine Producer Day
Mar. 1 4-H State Scholarships Due
Mar. 2 FR CO. Beef Weigh-In
Mar. 3 Blue & Gold Due
Week of Mar. 17 Blue & Gold Delivered
Mar. 21 AN CO. Scholarships Due
Mar. 22 Jr. Meat Goat Producer Day
Mar. 26 OS CO. Beef Weigh-In
Mar. 30 AN CO. Beef Weigh-In

APRIL

Apr. 20 Last Day to Order Market Beef DNA Envelopes for Nominations
Apr. 23 FR CO. Small Animal Weigh-In



MAY

May 1. Market Beef Nominations Due
May 6 OS CO. Small Animal Weigh-In
May 7 AN CO. Small Animal Weigh-In

JUNE

June 5 Last Day to Order Small Animal DNA Envelopes for Nominations
June 15 Small Animal Nominations Due

JULY

July 10-12 Richmond Free Fair
July 14-19 Franklin County Fair
July 16-19 Osage City Fair
July 28-Aug 1 Anderson County Fair

AUGUST

Aug. 5-8 Overbrook Fair

SEPTEMBER

Sept. 5-19 Kansas State Fair

A Message From Your 4-H Agent!

*Resiliency in Action: The Value of Public
Speaking: Empowering Our Youth through
Communication Skills*



As a parent and youth development leader, I often seek opportunities to help our children grow into confident individuals. One of the most valuable skills we can provide them with is effective communication. Public speaking, in particular, is a soft skill that not only empowers our youth but also prepares them for success in school, their future careers, and life in general.

When my daughter was seven years old, we prepared for her first talk for the 4-H club meeting. The nerves were intense; we practiced tirelessly, and she had every word memorized. Yet, when the big moment arrived, she stood in front of her peers, her voice barely above a whisper, and the silence felt like an eternity. As a parent, I wanted to rush up and tell her, “You can do this!” But I knew she needed to find her voice on her own. After what felt like forever, she finally started to speak, and I saw that spark of determination ignite in her eyes.

Fast forward to my own childhood—I vividly remember dreading Club Days. My parents insisted I participate, and I often resented their encouragement. But looking back now, I realize how essential those moments were for my growth. Thanks to their perseverance, I learned how to articulate my thoughts clearly and communicate confidently. Today, I am unafraid to stand in front of crowds or board meetings to share my ideas and insights.

This brings me to the critical role that events like Club Days play in our children’s development. These events are not just about giving a talk; they are about encouraging our youth to step outside their comfort zones and practice a skill that will serve them well throughout their lives. The ability to speak confidently in public can make all the difference in how our children express themselves, whether in a classroom, at a job interview, or when advocating for their ideas in a discussion.

As parents, we might recognize the challenges involved in motivating our children to participate in events like Club Days. We understand the nerves and self-doubt that accompany public speaking. However, our involvement and encouragement can make a remarkable difference. By supporting our children through this process, we equip them with the tools they need to communicate effectively and grow as individuals. Imagine the pride of watching your child deliver their thoughts passionately, their confidence illuminating the room. As we help them navigate the often-daunting task of public speaking, we are laying the groundwork for their future success.

Join us at Club Days, and let’s empower our youth to find their voices!

District Details

Leaders have you...

Review

- Turned in your organization Reports and Financial Reviews?
- Re-enrolled?
- Looked over deadlines & dates?
- Promoted enrollment
- Checked Volunteer enrollment
- Encouraged 4-H members to ask a friend to attend meetings
- Encouraged current 4-H members to review and complete applications for Citizenship in Action
- Reminded all 4-H members and parents who are volunteers to enroll via 4-H Online
- Provided officers and clubs leadership updates as soon as possible to the Extension Office

To-Do

- Check mailbox at the Extension Office
- Report from 4-H Council Meetings
- Update Volunteer Renewal information
- Organizational Report



[Animal Science Newsletter](#)

Did you know that there is a monthly newsletter written by the KSU Animal Science Department. Be sure to check it out, as they write important topics, such as camps coming up, upcoming events, topics you might need to know in the barn. Check out the link above to find information you might need to know!



[Setting Project Goals](#)

After choosing projects, it is important to plan what can be learned and accomplished. What new skills can be gained? Who is going to help along the way? Setting measurable goals will help guide youth through positive 4-H project learning experiences. This resource can help members get started!



[Kansas Clover Classroom](#)

The Kansas Clover Classroom is an amazing 4-H project supplemental guide available to 4-H families. Taking photos, designing a cabinet, building rockets, collecting insects, tending to livestock...those activities are part of a much bigger, project-based learning process to prepare youth for the future. Which challenge will you take on?



[Rock Springs Camp 2025](#)

Summer Camp 2025 registration open! There are eight different traditional 4-H camp dates in June and July. We recommend **Session two!** There are also three CIT dates in June and July and two LIT dates in June. They have also added a two night mini camp for rising 1st-3rd graders, as well as a Specialty camp for rising 6th-9th graders. Transportation schedules are being finalized. Check out which date and/or camp works best for you! Camperships (scholarships) are available for all levels!

District Details

Members have you...

Checked off

- Re-Enrolling in 4-H?
- Asked a friend to join
- Signed Up to Present at a Club Meeting?
- Set Project Goals?
- RSVPed for Leadership Event

Review

- 4-H members: ask a friend to attend meetings
- Encourage current 4-H members to review and complete applications for Citizenship in Action
- Remind all 4-H members and parents who are volunteers to enroll via 4-H Online
- Provide officers and clubs leadership updates as soon as possible to the Extension Office



Distict Club Days

District Club Day will be **February 22, 2025**, at Central Heights, 3521 Ellis Road, Richmond. Youth may participate in group and/or individual events (ex: model meeting, gavel games, choir, demonstration, project talk, reading, career exploration, etc.). Regardless of what a member decides to do, the guidelines should be reviewed. Other helpful resources are the score sheets and the Communication Fact Sheets. All Frontier District 4-H members are encouraged to participate in the eventful day! A registration link will be available **January 27th** through **February 7th** at 8:00 a.m. Participants registering as individuals will need to register separately. Groups, duos and ensembles will need to be registered by ONE person. Use this link! Be sure to have the oldest participant's name and age. Each 4-H club will be assigned a room and will be responsible for making sure someone is in charge of the room at all times. Those clubs sharing a room should contact each other to make arrangements for monitoring responsibilities. Those assignments will be sent to club leaders. Direct all questions to the Extension Office. Regional Club Day information will be available in next month's newsletter.



Scholarships

The Kansas 4-H Scholarships are now available. There is the 4-H scholarship, and the Vanier Family Scholarship! They are all due **March 1st**. The new scholarship process has combined the State 4-H Scholarships and the Vanier Family Scholarship Program (VFSP) applications together. We hope that this encourages more applicants to pursue both of these scholarship opportunities. Please review the instructions to see which scholarships you are eligible for. These are great opportunities, and we highly recommend looking into these!



Entomology Meeting

The meeting is at the Allen County Extension Office on **February 8th** at 1:00 p.m. We will be working on pinning insects, so please bring 3 or 4 insects to pin. Make sure they have been in a relaxing chamber for at least 12 hours before the meeting. We will also make an insect valentine craft - one for you to take home and one for the Senior Citizens Center. This will count as a Regional level community service project in your record books. Our lesson will be on insect legs. Questions? Call Vicky at (620)804-9170.

District Details

Member/Volunteer Enrollment

The new 4-H year began **October 1st**, so it is time for new and returning 4-H members and volunteers to enroll. All returning 4-H members and volunteers should be re-enrolled by December 1st. Projects and/or clubs will need to be added when enrolling. Project years should auto-populate, if not, please call the office. Families are also encouraged to confirm the email address and phone numbers for the family and for each member or volunteer. Direct any questions or concerns to the Extension Office.

- [Click here to enroll](#)
- Create an account
- Select your participation type
- Choose your county & club
- Select your projects (remember, once you have enrolled, if you need to add more, message your Extension Office.)
- Review consent forms, there are more this year!
- Enter member information
- Click submit!



Horse Project Updates

The [Kansas 4-H Horse ID Certificate \(P1039\)](#) has been updated for the 2025 4-H program year. Beginning with the 2025 4-H program year, please use the new form and destroy previously used 4-H Horse ID Certificates. As a reminder, to properly identify your horse, complete the 4-H Horse ID Certificate, have your Extension Agent sign it and copy it. A COPY of the Horse ID Certificate is kept on file in the Extension Office and the 4-H Horse member maintains the ORIGINAL certificate. The original certificate is presented by the 4-H member to show staff for check-in at the local 4-H horse shows. Beginning in 2025, registration papers WILL NOT be accepted to identify horses for the 4-H Horse project. An [example of the Horse ID Certificate](#) is available online



Important Livestock Dates

Check out the Youth Livestock Program Newsletter or “like” the Kansas State Youth Livestock Program on Facebook!

4/20/25: Last day to order Market Beef DNA Envelopes for Nominations

5/1/25: Market Beef Nominations Due for KSF & KJLS

6/5/25: Last day to order Small Animal Livestock DNA Envelopes for nominations

6/15/25: Commercial Heifer, ALL Swine, ALL Sheep and ALL Meat Goat Nominations Due for KSF & KJLS.

9/5-14/25: Kansas State Fair

10/3-5/25: Kansas Jr. Livestock Show



KSF & KJLS Information

Families planning to participate in the Kansas State Fair Grand Drive or the Kansas Junior Livestock Show will need to Order DNA envelopes. Families will purchase envelopes directly through ShoWorks for each animal to be nominated. The cost will be \$12/animal.

1) DNA envelope orders will close **April 20th** for market beef and June 5th for small livestock. Families must get envelopes ordered early! DO NOT WAIT!

2) Market Beef Nominations due **May 1st**. Commercial Heifer, ALL Swine, ALL Sheep and ALL Meat Goat Nominations are due **June 15th**.

3) NOTE: ENTRY IS ONLINE ONLY!

VETERINARY SCIENCE 4-H PROJECT MEETING

*COME LEARN MORE ABOUT THE
VETERINARY SCIENCE 4-H PROJECT!*

MORE CLASSES TO COME.

- Open to whole District
- Learn what you can show at the Fair
- Explore the world of vet science

**LOCATED AT
COTTONWOOD ANIMAL
HOSPITAL
3161 K8 HWY, OTTAWA, KS**

DATE February 25th, 2025

TIME @ 6:30 p.m.

K-STATE
Research and Extension



Frontier
District



Save the date

YQCA Training & Livestock Grooming Clinic

At the Franklin County Fair Grounds

MARCH 2025

Sun	Mon	Tue	Wed	Thu	Fri	Sat
						01
02	03	04	05	06	07	08
09	10	11	12	13	14	15
16	17	18	19	20	21	22
23/ 30	24/ 31	25	26	27	28	29

K-STATE
Research and Extension



Frontier
District

Save the date

Shopping in Style & Fashion Review Day Camp

1:00-3:00PM Extension Office

MARCH 2025

Sun	Mon	Tue	Wed	Thu	Fri	Sat
						01
02	03	04	05	06	07	08
09	10	11	12	13	14	15
16	17	18	19	20	21	22
23/ 30	24/ 31	25	26	27	28	29

K-STATE
Research and Extension



Frontier
District

Save the date

STEAM Day Camp
Details Coming Soon

MARCH 2025

Sun	Mon	Tue	Wed	Thu	Fri	Sat
						01
02	03	04	05	06	07	08
09	10	11	12	13	14	15
16	17	18	19	20	21	22
23/ 30	24/ 31	25	26	27	28	29

K-STATE
Research and Extension



Frontier
District

Social Impact Lab

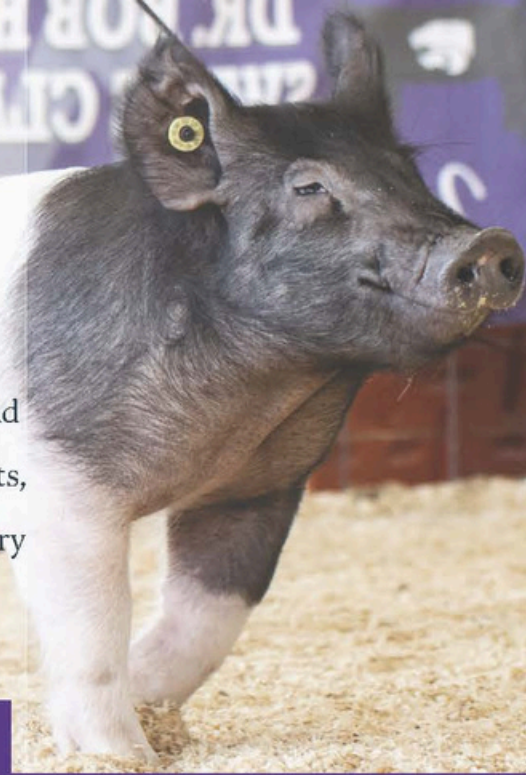
SAVE THE DATE!

SOCIAL IMPACT LAB

APRIL 2, 2025

Social Impact Lab is a day where middle and high school students from across Kansas are introduced to various helping professions. Come meet K-State faculty and students, tour our campus, and explore majors that make a difference.

2025 K-State Junior Swine Producer Day



Join us on Saturday, March 1, 2025 for the biennial K-State Junior Swine Producer Day at the Stanley Stout Center in Manhattan. This educational event will be a fun-filled day in which youth, parents, agents, ag teachers, and swine project leaders can increase their knowledge of youth swine projects. Presentations will be provided by K-State faculty members, graduate students, former exhibitors, and guest speakers. All ages and skill levels are invited! Participants will receive a K-State Show Pig Guide, t-shirt, and complimentary lunch. Only those who register by February 5 will receive a t-shirt. The registration fee is \$20/person for those who sign up by the registration deadline, or \$25/person after that date. Registration is limited to 400 attendees, on a first come, first served basis. This is a family event! Anyone attending must register, including all youth and adults.

March 1



Tentative Schedule

- 8:00AM Registration Opens
- 9:00AM Welcome
- 9:15AM Project Selection
- 10:00AM Breakout Sessions
 - Nutrition, Meats, Facilities & Equipment, Breeds & Ear Notching
- 12:00PM Lunch
- 12:45PM Health
- 1:30PM Breakout Sessions
 - Showmanship, Daily Care & Clipping, Show Day Prep, Resources
- 3:00PM Wrap-up
- 3:30PM YQCA Training (optional)



Registration

- ✔ \$20/person by February 5
- ✔ \$25/person after February 5
- ✔ Late registrants will not receive a t-shirt.
- ✔ All attendees must register, including youth, parents, and adults.
- ✔ No refunds.
- ✔ Attendance is limited to the first 400 participants to register.



Questions?

Joel DeRouchey
jderouch@ksu.edu
785.532.2280

Lexie Hayes
adhayes@ksu.edu
785.532.1264

Register By February 5

Limited Attendance

 **Location**
Stanley Stout Center

 **Register Online**
<https://commerce.cashnet.com/KSUASIND>

K-State, County Extension Councils, Extension Districts, and U.S. Department of Agriculture Cooperating. All educational programs and materials available without discrimination on the basis of race, color, religion, national origin, sex, age, or disability.

K-State Research and Extension and the Department of Animal Sciences & Industry, or their assignees, reserve the right to photograph, record the image and/or voice of participants for future research, educational, or promotional purposes. By attending, you provide consent to the above items and waive all rights to claims for payment or royalties in connection with any use of said images or recordings, unless you notify event organizers you withhold consent, in writing, prior to the event.



Scan Me!

K-State Junior

3.22.25

Event

Join us on Saturday, March 22, 2025 for the biennial K-State Junior Meat Goat Producer Day at the Stanley Stout Center north of the K-State campus in Manhattan. This educational program will be a fun-filled day in which youth, parents, agents, ag teachers, project leaders, and volunteers can increase their knowledge of youth meat goat projects. Presentations will be provided by K-State faculty members, graduate students, former exhibitors, and guest speakers. All ages and skill levels are invited! Participants will receive a K-State Meat Goat Show Guide, t-shirt, and complimentary lunch. Only those who register by the deadline on February 26 will receive a t-shirt. The registration fee is \$20/person before February 26 and \$25/person after the deadline. This is a family event! Anyone attending must register, including all youth, parents, and adults. Registration is **limited to 400** participants, filled on a first come, first serve basis.

Tentative Program

Friday, March 21
 5:00-7:00PM *Optional Tour*
 Sheep & Meat Goat Center
 Saturday, March 22
 8:00AM Check-in
 9:00AM Welcome
 9:15AM Selection
 10:00AM Breakout Sessions

- Nutrition
- Facilities & Equipment
- Doe Management & Kidding

11:15AM Health & Wellness
 12:00PM Lunch
 1:00PM Breakout Sessions

- Showmanship
- Reproduction
- Clipping & Grooming

3:15PM Wrap-up
 3:30PM YQCA Training (*optional*)
 4:00-6:00PM *Optional Tour*
 Sheep & Meat Goat Center

K-State, County Extension Councils, Extension Districts, and U.S. Department of Agriculture Cooperating. All educational programs and materials available without discrimination on the basis of race, color, religion, national origin, sex, age, or disability.

Registration

- 💰 \$20/person by February 26
- 💰 \$25/person after February 26
- 💰 Late registrants will not receive a t-shirt.
- 💰 All attendees must register, including youth, parents, & adults.
- 💰 No refunds
- 💰 Attendance is limited to the first 400 participants to register.



Questions?

Lexie Hayes
 adhaves@ksu.edu
 785.532.1264

Register Online

<https://commerce.cashnet.com/KSUASIND>

By

February 26

Highly pathogenic avian influenza, or HPAI, is a rapidly spreading viral disease that can infect many types of birds. Avian influenza, often called avian flu or bird flu, can be common, but some strains are highly pathogenic, which means they are more deadly. Introduced by migrating wild birds, HPAI can spread through spring migration and affect all domestic poultry – small and backyard flocks as well as commercial industries.

Poultry with HPAI do not survive the illness. Vaccines for HPAI are not readily available.

Signs of Avian Influenza

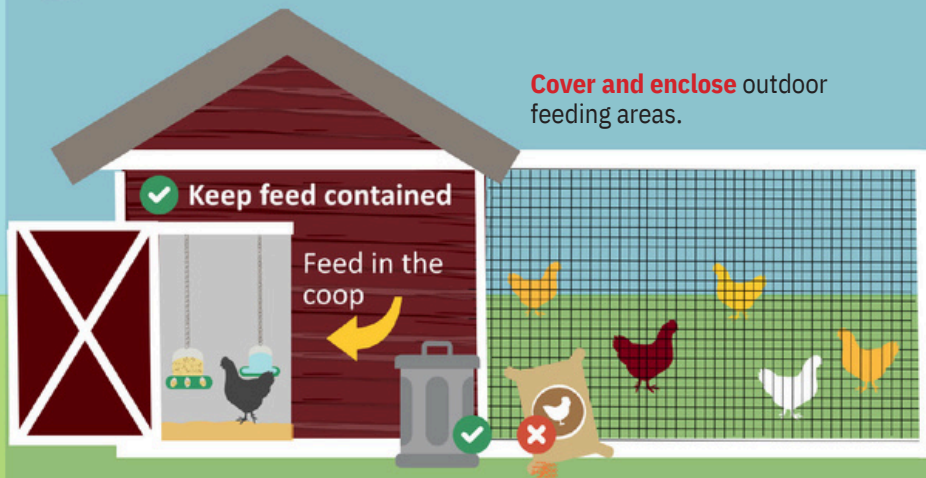
- Coughing and sneezing
- Difficulty breathing
- Extreme depression
- Lack of energy
- Decrease in feed or water intake
- Swelling or purple discoloration of head, eyelids, comb, wattle and legs
- Decrease in egg production
- Sudden unexplained death

Biosecurity is your best option to prevent HPAI from entering your small or backyard poultry flock.

Here is what you can do:

Protect Your Small Flock from Avian Influenza

1 **Avoid** attracting wild birds and waterfowl to your home or farm. Song birds, sparrows, starlings, etc. are **low risk**.



- Clean up** feed spills.
- Reduce** puddles and standing water.
- Avoid** visiting ponds and streams, especially with pets.
- Do not** move birds from farm to farm.
- Isolate** new birds.



2 **Limit** or **halt** travel with your birds to sales, shows and swaps. Ensure you have clean hands, clothes, and footwear before handling your birds if you attend events. **Do not** allow others to handle your birds.



3 **Limit** your birds' visitors. If someone must visit your birds: discuss where they have been. Have them wash their hands and wear clean clothes and footwear.





KANSAS 4-H HORSE PANORAMA

SAVE THE DATE!!

FEBRUARY 22-23, 2025 ROCK SPRINGS

Save the date! Registration
information coming soon!!!

Kansas State University Agricultural Experiment Station and Cooperative Extension Service.
K-State Research and Extension is an equal opportunity provider and employer.

K-STATE | 
Research and Extension

When: February 22-23, 2025

[DRAFT Schedule](#)

[Register Here](#)

[Hippology, Horse Bowl, Presentation Rules](#)

[Virtual Rules](#)

Registration includes housing and meals at Rock Springs as well as contest fees. Everyone who attends MUST register. All youth must have an adult chaperone.

Cost:

Youth Participant- Full time \$155 (February 22-23)

Youth Participant with Friday check-in \$185.00

Youth Participant Saturday only \$130

Adult Full-time \$130

Adult with Friday check-in \$170

Virtual \$0

Where: Rock Springs

Who: 4-H Members ages 9-18 and adult volunteers. Horse Panorama is a compilation of various contests related to the Horse Project. Contests include: quiz bowl, hippology, public speaking presentations, photography and educational posters.

Anderson Activities

County Council Committees

National 4-H Week	All Clubs
Achievement Night Celebration	Lucky 13
County Wide Fun Event	Star Shooting
County Wide Community Service	Cherry Mound
Club Days	Lucky 13
Recognition of 4-H Seniors	Cherry Mound
District Wide Day Camp	Star Shooting
New Member Event	All Clubs
After Fair Pool Party Treats	Seekers Not Slackers
District Activity	Seekers Not Slackers



4-H Council Meeting

Our next meeting will be **March 10, 2025 at 7:00 p.m. in the Extension Office Meeting Room.** Be sure to attend and represent your club as there must be a leader and youth representative from each club at every meeting in order for the club to be on track to receive a purple seal at year's end.



Animal Weigh-In and Tagging Dates

Beef: **March 30, 2025, 2-4 p.m. at Garnett weigh station**

Small Animal: **May 7, 2025, 5-7 p.m. at the fair grounds**

Note: Per Fair board rules, all tagging for county fair will be done at weigh-in only. If missed, the animal will be ineligible to be shown at the Anderson County Fair.



Cloverbuds

We are having monthly Cloverbud meetings for 5 and 6 year old youth enrolled in the Cloverbud program. If your child isn't enrolled, please add them to 4-H Online. Our February meeting will be **February 13, 2025 from 4:15-5:15 pm.** We will meet in the Extension Office. If you have questions, please contact the office.



Fair t-shirt designs needed!!

The Fair Board has chosen a theme for the 2025 fair! It is **The Anderson County Fair: Something to Crow About!** Please send your t-shirt design for this theme to Jeanette at jlstineb@ksu.edu. It MUST be in PNG or PDF format for the t-shirt printer. **Designs are due Feb. 7, 2025 in order to be considered at the Fair Board meeting.**



Blue & Gold Fundraiser

We are selling Blue and Gold Meats (bacon, sausage and chicken strips) as a fundraiser again this year. This is a great fundraiser as most of the county is familiar with the products. Proceeds will be divided between 4-H Council and the 4-H Clubs. Packets have been handed out to club leaders. All orders and money is due to the Extension Office by March 3, 2025. Delivery is expected the week of March 17, 2025. The exact date will be announced closer to that time.



Kansas Youth Range Camp

Upcoming High School Sophomores, Juniors, & Seniors are invited to attend the Kansas Youth Range Camp in June. See the flyer on the next page. The Anderson County Conservation District will provide 1 scholarship to an Anderson County 4-H member that is interested in attending. Contact 785-448-6323 ext. 101 for application details.

Are YOU interested in plants, livestock or wildlife?



KANSAS YOUTH RANGE CAMP

White Memorial Camp, Council Grove, KS

Upcoming High School Sophomores, Juniors, & Seniors

Learn about range plant identification, plant growth, stocking rates, livestock nutrition, and rangeland wildlife management

Enjoy field trips, hands on learning, a steak dinner, swimming, fishing, and hiking!



June 10-13, 2025

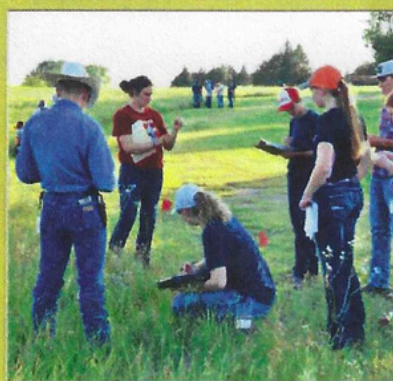
COST: \$300

Contact your local Conservation District for scholarship opportunities!

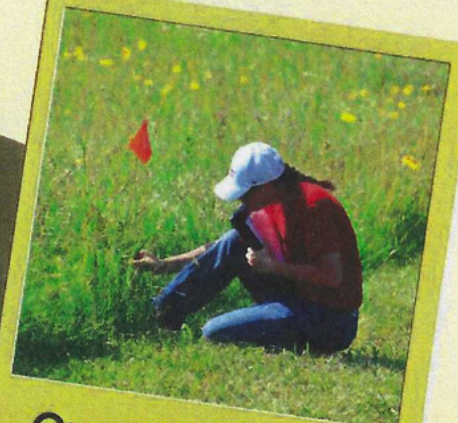
Call 785-448-6323 ext. 101 to get application



Educating Kansas



Youth for



Over 60 years!

REGISTER NOW



Sponsored by:
Kansas Section,
Society for Range
Management

Contact:
Courtney Jackson
KS Youth Range Camp Chair
620-767-5111 ext. 3
courtney.jackson@usda.gov

MEMBERS: DON'T FORGET TO BE SELLING!



Go for the Gold

We're selling Blue & Gold Sausage, Bacon and Chicken Tenders to raise money for:

Anderson County 4-H

CONTACT: Anderson County Extension Office 785-448-6826

SALE DATES: January 1-March 2

ORDERS & MONEY March 3

DUE BY:

Thanks for
your support!



Make checks
payable to
Anderson County
4-H Council

www.blueandgoldsausage.com

Osage Opportunities

County Council

February 24th @ 7 p.m.
Lyndon Extension Office

County Wide Fundraiser	MJH
Club Day	NO
Achievement Night Celebration	WW
District Wide Day Camp	Ambassadors
Council By-laws & National 4-H Week	BG
District Wide Event	LL

Save The Date:

Osage City Fair:

July 16-19, 2025

Overbrook Fair:

August 5-8

Blue & Gold:

Due March 3rd, Delivered week of March 17th



Shooting Sports Schedule

Air Rifle Schedule:

Sundays at 3 p.m. January 19th through February 9th at the Osage City Fair Pavillion.

Members must be eight years old by January 1st, to participate. Some disciplines have other age restrictions. Shooters MUST attend the first date of discipline for safety training, review of 4-H code of conduct and to complete all paperwork. Direct any questions to Marcie at 785-640-2270 or mkquaney@gmail.com.



Spring Tagging and Weigh In

Beef: **March 26th, 2025**; 4-6 p.m. at the Osage City Fairgrounds. This will include all cattle (breeding, market and bucket calf). Bucket calves may be tagged at either tagging date.

Small Animal: **May 6th, 2025**, 4-6 p.m. at the Osage City Fairgrounds. Small animals include: bucket calf, and market and breeding swine, sheep and goat.

Youth enrolled in Breeding beef, Dairy, Market and Breeding Meat Goat, Sheep, and Swine must own and have possession of animals by **May 15th**.

Youth enrolled in the Rabbit and Poultry project must own/have possession of animals by **June 15th**.

A bucket calf must have been born **Jan. 1st-May 1st** of the current 4-H year.



Blue & Gold Fundraiser

We are selling Blue and Gold Meats (bacon, sausage and chicken strips) as a fundraiser again this year. This is a great fundraiser as most of the county is familiar with the products. Proceeds will be divided between 4-H Council and the 4-H Clubs. Packets will be handed out to club leaders. All orders and money is due to the Extension Office by **March 3, 2025**. Delivery is expected the week of **March 17, 2025**. The exact date will be announced closer to that time.

Franklin Festivities

County Council

March 31, 7:00 p.m. @

Commission Chambers, 1418 S. Main, in Ottawa (down the hall from the Extension Office)

Club Day	RR
District Wide Day Camp	BGG & AR
Livestock Buyer Appreciation	SH
National 4-H Week Marketing	FOP & SS
Achievement Night Celebrations	RW
District Wide Event	PGB
Community Service & Fair Goody Plates	AT

Save the Date

Franklin County Fair;
July 14-19, 2025

Livestock Weigh-In & Tagging

Beef: **March 2nd, 2025**; 4-6 p.m. at Cottonwood Animal Hospital, 3161 K-68, in Ottawa. We will only have EID Tags this year.

Small Animal - **April 23th, 2025**; 4:00-6:00 p.m. at the Fair grounds, 220 W. 17th, in Ottawa. Small animal includes Swine, Sheep, and Goat. We will only be using EID Tags.

This year we only will be using **EID tags for all animals**. They will cost \$3.00 a tag, and you must pay for tags at weigh in. There will no longer be invoices, so please have exact change or check available at weigh-in.

Scholarships

[Franklin County Farm Bureau](#) - April 1st, 2025

[Ottawa Co-op](#) - April 1st, 2025

[Kansas 4-H](#) - March 1st, 2025

Franklin County Fair Updates

Our team, including members from Extension, the Fair Board, and Superintendents, has been actively discussing some rule changes aimed at enhancing our fair experience and aligning closely with State Fair guidelines. Please read the letter attached. For any questions please contact the office.

Save the Date

Save the date for **March 19th** for a day spent learning about grooming, character, leadership, and a YQCA training. this will be held at the Franklin County Fair Grounds. Be on the look out for more information!

Shooting Sports Practice

Franklin County Shooting Sports will only offer archery for the upcoming year. Practices will begin sometime this April. **They are looking for other discipline leaders!** Practice dates will be listed when available and will also be sent to those who are enrolled in the project. Direct any and all questions to Becky Cain at FranklinCountyShootingSports@gmail.com as she is the current program coordinator.

Handy Links!

Please follow the links for more information

[4-H Policy](#)

The current KSRE and 4-H practices cover the new requirements and are now included as a reference in the policy.

[Electronic Treasurers Book](#)

An electronic version of the Treasurer's Book is available for any club or group to use. Located at the bottom of page on the club resource's page!

[Helpful Resources](#)

Here are some resources to help guide you in projects, or any national curriculum that might be helpful!

[Raffle Policy and Guidelines](#)

Any Extension unit-affiliated group (e.g. 4-H club, 4-H project group, etc.) wanting to conduct a raffle must first fill out and submit an application.

[Frontier District Website](#)

This is our website that holds lots of great information!

[Frontier District Facebook](#)

Follow us on Facebook for updated information!

[Kansas 4-H Website](#)

This is the Kansas 4-H website and is an excellent resource. Information about state events, project materials and the state 4-H newsletter is available.

[District Wide Project Leaders](#)

A list of District-wide projects and leaders is available to Frontier District 4-H members.

[Disabilities Accommodations Request Form](#)

The Americans with Disabilities Act (ADA) requires persons with disabilities be provided "reasonable" accommodations and prohibits discrimination against persons with disabilities. Accommodations are generally considered reasonable if they don't change the fundamental nature of the program or alter the essential criteria for participation. Accommodations meeting these standards should typically be provided. Reasonable accommodations are determined through an interactive process between the community member and local and State 4-H Offices. It is essential for the Accommodation Request Form to be filled out FIRST at the local level in collaboration with a local Extension Professional to launch a formal accommodations process. Because it can take time to plan for accommodations, KSRE requests this form be submitted no later than two weeks prior to the event/activity. Submitting a request on shorter notice may reduce and/or limit any ability to implement accommodations.



Meet the Staff

Rebecca McFarland

District Director
Family and Community Wellness
Agent
Ottawa Office
785-229-3520
rmcfarla@ksu.edu

Janae McNally

District Agent
Adult Development and Aging
and Family Resource Management
Lyndon Office
785-828-4438
jmcnally@ksu.edu

Ryan Schaub

District Agent
Crop Production and Farm
Management
Garnett Office
785-448-6826
reschaub@ksu.edu

Rod Schaub

District Agent
Livestock Production
Lyndon Office
785-828-4438
rschaub@ksu.edu

Chelsea Richmond

District Agent
Nutrition, Food Safety and Health
Garnett Office
785-448-6826
crichmon@ksu.edu

Lauren Gammill

District Agent
Horticulture and Natural Resources
Ottawa Office
785-229-3520
laurengammill@ksu.edu

Jessica Flory

District Agent
4-H Youth Development
Ottawa Office
785-229-3520
jrflory@ksu.edu

Jo Hetrick-Anstaett

4-H Program Manager
Lyndon Office
785-828-4438
janstaett@ksu.edu

Josie Medlen

4-H Program Manager
Ottawa Office
785-229-3520
josie03@ksu.edu

Jeanette Stinebaugh

4-H Program Manager
Garnett Office
785-448-6826
jlstineb@ksu.edu

Kierstyn Blaufuss

Office Professional
Ottawa Office
785-229-3520
kierstynb@ksu.edu

Liz Drennan

Office Professional
Garnett Office
785-448-6826
edrennan@ksu.edu

Anita Sobba

Nutrition Educator - Kansas SNAP-ED
Program
Garnett Office
785-448-6826
anitasobba@ksu.edu

Kris Wallace

Nutrition Educator - SNAP-ED
Ottawa Office
785-229-3520
krwall@ksu.edu

Janaya Reed

Financial Manager and Office
Professional
Lyndon Office
785-828-4438
jlhamlin@ksu.edu

Carol Engle

Communications & Marketing
Manager
Ottawa Office
785-229-3520
carolengle@ksu.edu