

# 4-H UPDATE

December 2024

Garnett Office  
411 S. Oak  
PO Box 423  
Garnett KS 66032-0423  
Phone: 785-448-6826  
FAX: 785.448.6153

Lyndon Office  
128 W. 15th  
PO Box 400  
Lyndon KS 66451  
Phone: 785-828-4438  
FAX: 785.828.3427

Ottawa Office  
1418 S. Main,  
Suite 2  
Ottawa KS 66067  
Phone: 785-229-3520  
FAX: 785.229.3527

## GREAT THINGS HAPPENING....

November 23-24th the Frontier District took 6 youth to Kansas Youth Leadership Forum (KYLF) at Rock Springs. We took Braden Gillespie from Anderson County. Calla Higbie, which is on the Kansas 4-H Council, Anah Higbie and Brynn Perry From Franklin County. Brody Thompson and Kevin Whitmer from Osage County. They had lots of fun, and would love to tell you about their time, and invite you to attend next year!



## ROCK SPRINGS CAMP 2025

Summer Camp 2025 registration opened **November 15, 2025!** This includes half week, full week, LIT (Leader in Training) and Counselor in Training (CIT) sessions. Early bird registration rate (10% discount) ends **December 31st**. There are eight different traditional 4-H camp dates in June and July. We recommend Session two! There are also three CIT dates in June and July and two LIT dates in June. They have also added a two night mini camp for rising 1st-3rd graders, as well as a Specialty camp for rising 6th-9th graders. Transportation schedules are being finalized. Check out which date and/or camp works best for you! Camperships (scholarships) are available for all levels!



### OFFICES CLOSED

- December 25th-January 1st
- January 20th
- February 17th

### AT A GLANCE

- [Calendar](#)
- [Achievement Night Results](#)
- [Message from 4-H Agent](#)
- [Financial Reviews Due](#)
- [Enrollment](#)
- [Setting Project Goals](#)
- [Kansas Clover Classroom](#)
- [Holiday Hero's](#)
- [Scholarships](#)
- [Entom. Family Day](#)
- [Anderson Activities](#)
- [Osage Opportunities](#)
- [Franklin Festivities](#)
- [Meet the Staff](#)

# 4-H Calendar

## DECEMBER

**Dec. 1** Returning Members/Volunteers Enrollment Due

**Dec. 1** Club Organization Reports due

**Dec. 1** Kansas 4-H T-Shirts for Sale

**Dec. 7** Elite Livestock Judging Clinic

**Dec. 2-20** Holiday Hero's Drop Off

**Dec. 13** 4-H Day @ KSU Women's Basketball RSVP Due

**Dec. 14** Entomology Meeting

**Dec. 23** OS CO. Leadership Night

## JANUARY

**Jan. 4** 4-H Day @ KSU Women's Basketball

**Jan. 10** Senior PRRFs due for SE Area judging

**Jan. 13** AN CO. Leadership Night

**Jan 27** FR CO Leadership Night

## FEBRUARY

**Feb. 10** Kansas 4-H Horse Panorama

**Feb. 22** District Club Days

## MARCH

**Mar. 1** Jr. Swine Producer Day

**Mar. 1** 4-H State Scholarships Due

**Mar. 2** FR CO. Beef Weigh-In

**Mar. 3** Blue & Gold Due

**Week of Mar. 17** Blue & Gold Delivered

**Mar. 21** AN CO. Scholarships Due

**Mar. 22** Jr. Meat Goat Producer Day

**Mar. 26** OS CO. Beef Weigh-In

**Mar. 30** AN CO. Beef Weigh-In

## APRIL

**Apr. 23** FR CO. Small Animal Weigh-In

## MAY

**May. 6** OS CO. Small Animal Weigh-In

**May. 7** AN CO. Small Animal Weigh-In

## SAVE THE DATE

**Franklin County Fair**

July 14-19, 2025

**Osage City Fair**

July 16-19, 2025

**Overbrook Fair**

August 5-8

# 4-H Achievement Night Results!

The 2024 4-H year has officially come to an end! An achievement celebration was held for each county to recognize achievement pin recipients, Project Record Report Forms (PRRF) winners, volunteers and special award honorees.

## Club Seals

The following are the senior 1st place PRRF winners. Each is eligible to send his/her record(s) to Area Judging. After modifications are made, books should be returned to the Extension Office by **January 10th**.

Congratulations to the following 4-H Clubs for earning a purple seal for work on the club, county and state levels: Appanoose Trailblazers, Princeton Goal Busters, S.H.A.F.F., Burlingame, Lyndon Leaders, Melvern Jr. Highline, North Osage, Willing Workers; Cherry Mound, Lucky 13, Seekers Not Slackers, and Star Shooting.

**Beef:** Braelyn McNally, Melvern Jr. Highline; Brody Barnes, Lucky 13

**Citizenship:** Karlie Stinebaugh; Princeton Goal Busters

### Fiber Arts:

**Foods:** Brystol Barnes, Lucky 13; Kevin Whitmer, Willing Workers; Wyatt Oberly, Princeton Goal Busters

**Horse:** Katie Lowry, Burlingame

**Leadership:** Jotham Meyer, Princeton Goal Busters; Allie Kneisler, Lyndon Leaders

**Meat Goats:** Allie Kneisler, Lyndon Leaders

**Poultry:** Mara Drieling; S.H.A.F.F.

**Photography:** Blane King, Seekers Not Slackers; Levi Behrends; S.H.A.F.F.

**Rabbits:** Wyatt Oberly; Princeton Goal Busters

**Self-Determined:** Blane King, Seekers Not Slackers

**Sheep:** Kevin Whitmer, Willing Workers

**Swine:** Auvrie Adams, Lucky 13; Jaiton Bosse, Willing Workers

**Visual Arts:** Blaine King, Seekers Not Slackers; Levi Behrends; S.H.A.F.F.

**Woodworking:** Landon Schillig, Lucky 13

## Key Award Winners

Karlie Stinebaugh; Princeton Goal Busters  
Hank Newton, Cherry Mound

## Special Awards Winners

Congrats to everyone!

### Franklin County;

**Good Manners Award:** Brynn Perry, Rowdy Wranglers

**Spirit of the Fair Award:** Wyatt Rossi, Rambling Ranchers

**Turner Awards:** Carlee Vickers, Rambling Ranchers & Fox Houlk, Princeton Goal Busters

**I Dare You Award:** Wyatt Oberly, Princeton Goal Busters

**Glen Hayward Leadership Award:** Jotham Meyer, Princeton Goal Busters

**Eric Piotrowsky Spirit of a Leader Award & Scholarship:** Amelia Behrends, S.H.A.F.F.

**40 Years of Service:** Dawn Rumford

### Osage County:

**Osage City Fair Herdsmanship:** Gage Cannon, North Osage

**Overbrook Fair Herdsmanship:** Abby Lang, North Osage

**I Dare You Award:** Jaiton Bosse, Willing Workers; Kevin Whitmer, Willing Workers

### Anderson County;

**40 Years of Service:** Gayla Corley

## Officer Book Winners

**Historian;** Kaelyn Talmage, S.H.A.F.F.; Brynlee Rockers, L13

**Reporter;** Elizabeth Meyer, Princeton Goal Busters; Allison Reeser, Melvern Jr. Highline; Landon Schillig & Brody Barnes, L13

**Secretary;** Tanis Normile, Rowdy Wranglers; Bella Reeser, Melvern Jr. Highline; Chance Witherspoon, CM

**Treasurer;** Kaelyn Talmage, S.H.A.F.F.; Kevin Whitmer, Willing Workers; Brynlee Rockers, L13

# A Message From Your 4-H Agent!

Happy  
Holidays



Happy Holidays! As we approach the end of the year, I would like to take a moment to express my gratitude to all of our 4-H members and families. Thank you for entrusting your children to our program! We have enjoyed watching them grow and develop through the 4-H way.

Many special things about 4-H help our youth transform, but during the holiday season, one particular aspect comes to mind: 4-H members' generous hearts. For instance, in Osage County, our Ambassador team is working hard on creating CASA cuddle kits. These kits will provide comfort and joy to children who have been taken away from their families and often have nothing but the clothes on their backs. We are deeply moved by the outpouring of support for this project, and it is heartwarming to see how much our 4-H families care.

We have also heard about the great work being done by 4-H clubs around the holiday months, and we applaud these efforts. These acts of kindness and compassion help to spread joy and cheer throughout our communities. So once again, thank you for your support and we wish you all a restful and enjoyable holiday season!



The holidays are approaching quickly! State 4-H has come up with a fun guild to keep you busy and active this winter season. "The Holiday Activity Guide has great ways to spend quality time with people, and we can learn so much from our family when we see them at the holidays," Beth Hinshaw, Extension Specialist said. "And to be able to have these learning experiences with them – that'll make a memory for us as well". Please follow the link to find

[The Holiday Activity Guide!](#)

# District Details

## Leaders have you...

### Review

- Re-enrolled?
- Looked over deadlines & dates?
- Promoted enrollment
- Checked Volunteer enrollment
- Encouraged 4-H members to ask a friend to attend meetings
- Encouraged current 4-H members to review and complete applications for KYLF, Citizenship in Action
- Reminded all 4-H members and parents who are volunteers to enroll via 4-H Online
- Provided officers and clubs leadership updates as soon as possible to the Extension Office

### To-Do

- Check mailbox at the Extension Office
- Report from 4-H Council Meetings
- Update Volunteer Renewal information
- Final Financial Review



## Save the Date, District Club Days

Club Days will be held at **February 22nd** at Central Heights High School. More information to come!



## Club Organization Report

**The Club Organization Report is due December 1st.** This must be filled out so we know your club information. Please turn this in to the Extension Office. If you have questions, please ask.



## Member/Volunteer Enrollment

The new 4-H year began **October 1st**, so it is time for new and returning 4-H members and volunteers to enroll. All returning 4-H members and volunteers should be re-enrolled by December 1st. Projects and/or clubs will need to be added when enrolling. Project years should auto-populate, if not, please call the office. Families are also encouraged to confirm the email address and phone numbers for the family and for each member or volunteer. Direct any questions or concerns to the Extension Office.



## Setting Project Goals

After choosing projects, it is important to plan what can be learned and accomplished. What new skills can be gained? Who is going to help along the way? Setting measurable goals will help guide youth through positive 4-H project learning experiences. This resource can help members get started!



## Kansas Clover Classroom

The Kansas Clover Classroom is an amazing 4-H project supplemental guide available to 4-H families. Taking photos, designing a cabinet, building rockets, collecting insects, tending to livestock...those activities are part of a much bigger, project-based learning process to prepare youth for the future. Which challenge will you take on?

# District Details

Members have you...

Checked off

- Re-Enrolling in 4-H?
- Asked a friend to join
- Signed Up to Present at a Club Meeting?
- Set Project Goals?

Review

- 4-H members: ask a friend to attend meetings
- Encourage current 4-H members to review and complete applications for KYLF, Citizenship in Action
- Remind all 4-H members and parents who are volunteers to enroll via 4-H Online
- Provide officers and clubs leadership updates as soon as possible to the Extension Office



## Holiday Hero's

"It is better to give than to receive!" The KVC Kansas Holiday Heroes program is a way for individuals, families or groups to help brighten the holiday season for children in the foster care system. Purchased gifts or cash donations must be dropped off between **December 2nd- 20th** at the Westminster Presbyterian Church, 410 w. 13th St., in Ottawa. Monday-Thursday 8:30 to 12pm & 1 to 5:15pm; Friday 8am-12pm. Note: Drop off donations at the entrance on the north end of building by the fenced playground area. If needed, please call Donna at (785) 242-1824 for support. Please check out the link with shopping list and more information. All patrons from the Frontier District area are served through this office, so a youth from a specific county may be requested. This is a great community service project! Direct all questions to Jessi at [jkendell@kvc.org](mailto:jkendell@kvc.org) or call 816-541-1133.



## Scholarships

The Kansas 4-H Scholarships are now available. There is the 4-H scholarship, and the Vanier Family Scholarship! They are all due **March 1st**. The new scholarship process has combined the State 4-H Scholarships and the Vanier Family Scholarship Program (VFSP) applications together. We hope that this encourages more applicants to pursue both of these scholarship opportunities. Please review the instructions to see which scholarships you are eligible for. These are great opportunities, and we highly recommend looking into these!



## Entomology Meeting

Come join the fun and learn about insects! The next Entomology Project meeting will be on **Saturday, December 14th** at the Allen County Extension Office beginning at 1:00 p.m. Please bring your pinning boards, pinning supplies and 2 or 3 insects to pin. If you are just starting in this project, there will be pinning set ups available to purchase for \$10. 4-Hers please bring a short talk on Entomology on the subject of your choice. If it is about an insect, please try to do a "Who Am I?" to start out with. We are going to do a group community service project and try to grant a few Christmas wishes for some Senior Citizens. Please bring one or two items from the attached Christmas Wish List to put in our gift box. Questions: call Vicky at (620)804-9170.

# K-State Junior

# 3.22.25

## Event

Join us on Saturday, March 22, 2025 for the biennial K-State Junior Meat Goat Producer Day at the Stanley Stout Center north of the K-State campus in Manhattan. This educational program will be a fun-filled day in which youth, parents, agents, ag teachers, project leaders, and volunteers can increase their knowledge of youth meat goat projects. Presentations will be provided by K-State faculty members, graduate students, former exhibitors, and guest speakers. All ages and skill levels are invited! Participants will receive a K-State Meat Goat Show Guide, t-shirt, and complimentary lunch. Only those who register by the deadline on February 26 will receive a t-shirt. The registration fee is \$20/person before February 26 and \$25/person after the deadline. This is a family event! Anyone attending must register, including all youth, parents, and adults. Registration is **limited to 400** participants, filled on a first come, first serve basis.

## Tentative Program

Friday, March 21  
 5:00-7:00PM *Optional Tour*  
 Sheep & Meat Goat Center  
 Saturday, March 22  
 8:00AM Check-in  
 9:00AM Welcome  
 9:15AM Selection  
 10:00AM Breakout Sessions

- Nutrition
- Facilities & Equipment
- Doe Management & Kidding

11:15AM Health & Wellness  
 12:00PM Lunch  
 1:00PM Breakout Sessions

- Showmanship
- Reproduction
- Clipping & Grooming

3:15PM Wrap-up  
 3:30PM YQCA Training (*optional*)  
 4:00-6:00PM *Optional Tour*  
 Sheep & Meat Goat Center

K-State, County Extension Councils, Extension Districts, and U.S. Department of Agriculture Cooperating. All educational programs and materials available without discrimination on the basis of race, color, religion, national origin, sex, age, or disability.

## Registration

- \$20/person by February 26
- \$25/person after February 26
- Late registrants will not receive a t-shirt.
- All attendees must register, including youth, parents, & adults.
- No refunds
- Attendance is limited to the first 400 participants to register.



## Questions?

Lexie Hayes  
 adhaves@ksu.edu  
 785.532.1264

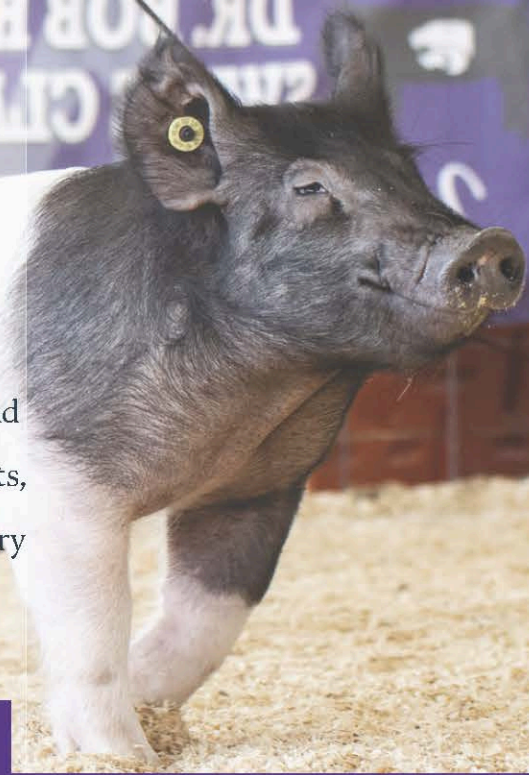
## Register Online

<https://commerce.cashnet.com/KSUASIND>

By

February 26

# 2025 K-State Junior Swine Producer Day



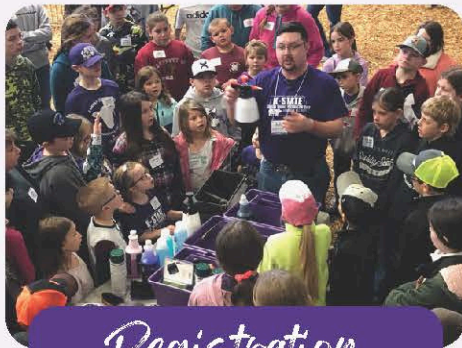
Join us on Saturday, March 1, 2025 for the biennial K-State Junior Swine Producer Day at the Stanley Stout Center in Manhattan. This educational event will be a fun-filled day in which youth, parents, agents, ag teachers, and swine project leaders can increase their knowledge of youth swine projects. Presentations will be provided by K-State faculty members, graduate students, former exhibitors, and guest speakers. All ages and skill levels are invited! Participants will receive a K-State Show Pig Guide, t-shirt, and complimentary lunch. Only those who register by February 5 will receive a t-shirt. The registration fee is \$20/person for those who sign up by the registration deadline, or \$25/person after that date. Registration is limited to 400 attendees, on a first come, first served basis. This is a family event! Anyone attending must register, including all youth and adults.

March 1



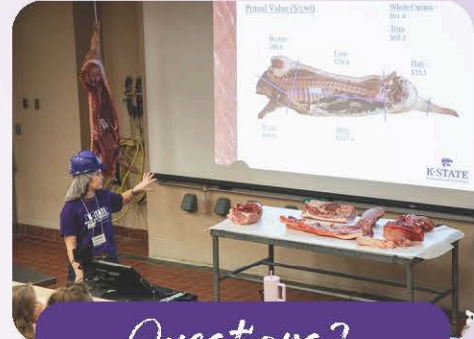
## Tentative Schedule

- 8:00AM Registration Opens
- 9:00AM Welcome
- 9:15AM Project Selection
- 10:00AM Breakout Sessions
  - Nutrition, Meats, Facilities & Equipment, Breeds & Ear Notching
- 12:00PM Lunch
- 12:45PM Health
- 1:30PM Breakout Sessions
  - Showmanship, Daily Care & Clipping, Show Day Prep, Resources
- 3:00PM Wrap-up
- 3:30PM YQCA Training (optional)



## Registration

- ✔ \$20/person by February 5
- ✔ \$25/person after February 5
- ✔ Late registrants will not receive a t-shirt.
- ✔ All attendees must register, including youth, parents, and adults.
- ✔ No refunds.
- ✔ Attendance is limited to the first 400 participants to register.



## Questions?

Joel DeRouchey  
jderouch@ksu.edu  
785.532.2280

Lexie Hayes  
adhayes@ksu.edu  
785.532.1264

Register By  
**February 5**  
*\*Limited Attendance\**

 **Location**  
Stanley Stout Center

 **Register Online**  
<https://commerce.cashnet.com/KSUASIND>



K-State, County Extension Councils, Extension Districts, and U.S. Department of Agriculture Cooperating. All educational programs and materials available without discrimination on the basis of race, color, religion, national origin, sex, age, or disability.

K-State Research and Extension and the Department of Animal Sciences & Industry, or their assignees, reserve the right to photograph, record the image and/or voice of participants for future research, educational, or promotional purposes. By attending, you provide consent to the above items and waive all rights to claims for payment or royalties in connection with any use of said images or recordings, unless you notify event organizers you withhold consent, in writing, prior to the event.

Scan Me!



Highly pathogenic avian influenza, or HPAI, is a rapidly spreading viral disease that can infect many types of birds. Avian influenza, often called avian flu or bird flu, can be common, but some strains are highly pathogenic, which means they are more deadly. Introduced by migrating wild birds, HPAI can spread through spring migration and affect all domestic poultry – small and backyard flocks as well as commercial industries.

Poultry with HPAI do not survive the illness. Vaccines for HPAI are not readily available.

### Signs of Avian Influenza

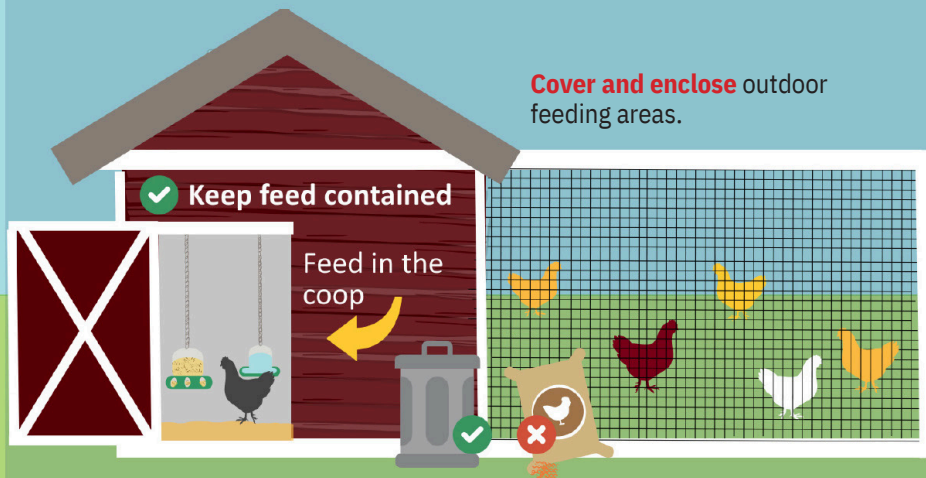
- Coughing and sneezing
- Difficulty breathing
- Extreme depression
- Lack of energy
- Decrease in feed or water intake
- Swelling or purple discoloration of head, eyelids, comb, wattle and legs
- Decrease in egg production
- Sudden unexplained death

Biosecurity is your best option to prevent HPAI from entering your small or backyard poultry flock.

### Here is what you can do:

## Protect Your Small Flock from Avian Influenza

**1** **Avoid** attracting wild birds and waterfowl to your home or farm. Song birds, sparrows, starlings, etc. are **low risk**.



- Clean up** feed spills.
- Reduce** puddles and standing water.
- Avoid** visiting ponds and streams, especially with pets.
- Do not** move birds from farm to farm.
- Isolate** new birds.



**2** **Limit** or **halt** travel with your birds to sales, shows and swaps. Ensure you have clean hands, clothes, and footwear before handling your birds if you attend events. **Do not** allow others to handle your birds.



**3** **Limit** your birds' visitors. If someone must visit your birds: discuss where they have been. Have them wash their hands and wear clean clothes and footwear.



# *The Elite Livestock Judging Clinic and Contest*

*Saturday December 7th 2024*

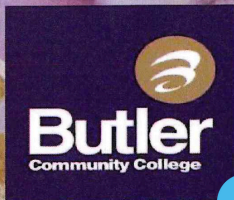
*Leavenworth County Fairgrounds  
Tonganoxie, KS*

*Come learn livestock evaluation from Butler County  
Community College Livestock Judging Team*

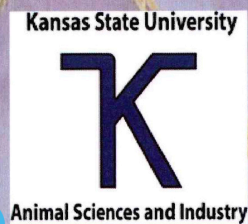
*New this year will be meats identification training  
hosted by KSU Meats Science Department*

*Follow us on Facebook for more info  
Leavenworth County Livestock Committee*

**Leavenwoth County**



**Livestock Committee**



SCAN ME for 2024 Elite Livestock Judging Clinic and Contest



# KANSAS 4-H HORSE PANORAMA

## SAVE THE DATE!!

### FEBRUARY 22-23, 2025 ROCK SPRINGS

Save the date! Registration information coming soon!!!



Kansas State University Agricultural Experiment Station and Cooperative Extension Service.  
K-State Research and Extension is an equal opportunity provider and employer.

**K-STATE**   
Research and Extension



**Kansas  
4-H  
T-Shirts  
for order!**



## Kansas 4-H T-Shirts

There are 2 designs available this year and they can be ordered online through **December 1, 2024** and will be shipped before December 25, 2024.

<https://bit.ly/4HGROWN2024>

The link to the online order form is up on the Kansas 4-H Website under **News and Updates**. You can order either design on any color listed.

Group or club orders will help you minimize shipping fees.

Thanks for supporting this 4-H Youth Leadership Council Fundraiser and showing Kansas 4-H Pride!

**K-STATE**  
Research and Extension



Youth Leadership  
Council

**Saturday, January 4, 2025, 4:00 PM**

**K-STATE**

Research and Extension



# Kansas 4-H Day with K-State Women's Basketball

**Opponent: Texas Tech Red Raiders**

**\$25: Ticket, Voucher (\$10 Concessions), & Shirt**  
**\$15: Ticket & Voucher (\$10 Concessions)**



## How to Get Tickets?

- ✓ Register! Use the QR Code or the link below!
- ✓ Pick up ticket packages - Location TBA closer to event. (1/4/2024) 2:30pm - 3:30pm
- ✓ Doors open for the general public (1/04/2024, 3:00pm)
- ✓ Tip-off! (1/04/24, 4:00 pm)



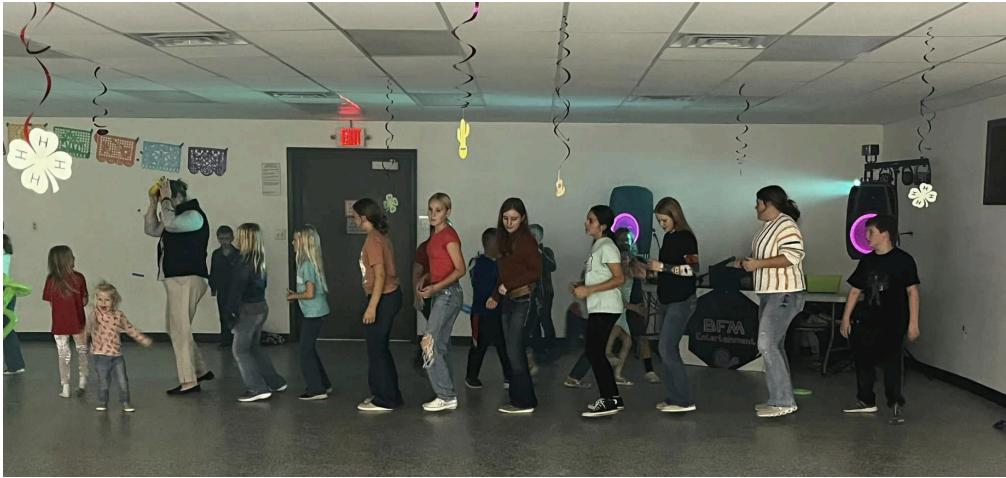
Kansas State University Agricultural Experiment Station and Cooperative Extension Service  
K-State Research and Extension is an equal opportunity provider and employer. Resource: <https://www.apa.org/topics/resilience>



**Online registration for this event will be due December 13, 2024. No paper registrations will be accepted. To register, go to:**

**<https://tinyurl.com/4HDaywiththeCats2025>**

# District Details for National 4-H Week



# Anderson Activities

## County Council Committees

|                               |                      |
|-------------------------------|----------------------|
| National 4-H Week             | All Clubs            |
| Achievement Night Celebration | Lucky 13             |
| County Wide Fun Event         | Star Shooting        |
| County Wide Community Service | Cherry Mound         |
| Club Days                     | Lucky 13             |
| Recognition of 4-H Seniors    | Cherry Mound         |
| District Wide Day Camp        | Star Shooting        |
| New Member Event              | All Clubs            |
| After Fair Pool Party Treats  | Seekers Not Slackers |
| District Activity             | Seekers Not Slackers |



## 4-H Council Meeting

Our next meeting will be **January 13, 2025 from 6-7:30 pm at the Community Building on the fair grounds.** It will be in conjunction with a **county wide Leadership event.** The Leadership event will be open to anyone of any age interested in honing their leadership skills. **Please see the next page for the flyer.** Be sure to attend and represent your club as there must be a leader and youth representative from each club at every meeting in order for the club to be on track to receive a purple seal at year's end.



## Animal Weigh-In and Tagging Dates

Beef: **March 30, 2025, 2-4 p.m. at Garnett weigh station**

Small Animal: **May 7, 2025, 5-7 p.m. at the fair grounds**

**Note:** Per Fair board rules, all tagging for county fair will be done at weigh-in only. If missed, the animal will be ineligible to be shown at the Anderson County Fair.



## Anderson County Scholarships

Anderson County 4-H members who are high school seniors this year and who plan to participate in any post high school education are encouraged to apply for the Anderson County 4-H Scholarship and/or the Grant Corley Memorial Scholarship. Applications are due by 5:00 p.m. to the Garnett Office by Friday, **March 21, 2025.**

Anderson County 4-H Council also offers a scholarship to 4-H members attending any out-of-county event (Camp, Discovery Days, State Geology Field Trip, Insect Spectacular, etc.). This scholarship can be used to help cover the cost of an in person or virtual event. Youth are eligible to receive the scholarship only once per 4-H year (**Oct. 1-Sept. 30**).

Also available is the Jeanette Arnett Event Scholarship. This will be awarded to youth attending any 4-H event that promotes personal or project development. There is no limit to the number of times a youth may apply. One application covers both event scholarships and must be submitted prior to the event payment deadline.



## Are you interested?

We have a committee that helps organize and make plans for awards at the fair. If you would be interested in joining that committee, please contact Jeanette at the Extension Office. Additionally, if you or someone you know would like to sponsor awards, please let Jeanette know contact information so she can get in touch with them.

# ANDERSON COUNTY

**JANUARY 13**

**2025**



## Leadership 101 Course

We are excited to be offering a leadership night in the Frontier Extension District on **January 13, 2025 from 6-7:30 pm**, where we will be focusing on practicing different leadership skills in the areas of character and teamwork. As Simon Sinek once said, 'Leadership is not about being in charge. It's about taking care of those in your charge.' A strong leader understands the importance of continuous skill-building. **All ages are encouraged to attend our event. Dinner will be served.** If you plan to attend, please use the link or QR code below to RSVP by January 7, 2025. We hope to see you there!



**PLEASE RSVP BY  
JAN. 7, 2025**

<https://forms.office.com/Pages/ResponsePage.aspx?id=cfqi2X3Wtky1QQbMqoAT-5UKJ3o-GIxAI5ndcCEuEh9UNUlyN1JNVjM3QktKQlhFM05LUVNBROMyRy4u>

OR

RSVP for Leadership Event on  
January 13, 2025



**It will be held at the Community Building on the Fair  
Grounds**

# Osage Opportunities

## County Council

December 23, 6:00 p.m. @  
Lyndon Community Building

|                                     |             |
|-------------------------------------|-------------|
| County Wide Fundraiser              | MJH         |
| Club Day                            | NO          |
| Achievement Night Celebration       | WW          |
| District Wide Day Camp              | Ambassadors |
| Council By-laws & National 4-H Week | BG          |
| District Wide Event                 | LL          |

## Save The Date:

### Osage City Fair:

July 16-19, 2025

### Overbrook Fair:

August 5-8

### Blue & Gold:

Due March 3rd, Delivered week of March 17th

## Leadership Event

Come and expand your Leadership Skills! All Osage County 4-H members and adults are encouraged to attend this Leadership Event. This will take the place of our **December 23rd** Council Meeting. We will be serving a pizza dinner starting at 6 p.m., with the Leadership Program starting at 6:30 p.m. We should wrap up between 7:30 and 8 p.m. This is a great opportunity to work on Leadership skills with other 4-H members from around the county! Please RSVP by **December 18th** [here](#). If you have any questions, please reach out to the office.

## Spring Tagging and Weigh In

Beef: **March 26th, 2025**; 4-6 p.m. at the Osage City Fairgrounds. This will include all cattle (breeding, market and bucket calf). Bucket calves may be tagged at either tagging date.

Small Animal: **May 6th, 2025**, 4-6 p.m. at the Osage City Fairgrounds. Small animals include: bucket calf, and market and breeding swine, sheep and goat.

Youth enrolled in Breeding beef, Dairy, Market and Breeding Meat Goat, Sheep, and Swine must own and have possession of animals by **May 15th**.

Youth enrolled in the Rabbit and Poultry project must own/have possession of animals by **June 15th**.

A bucket calf must have been born **Jan. 1st-May 1st** of the current 4-H year.

## Blue & Gold Fundraiser

We are selling Blue and Gold Meats (bacon, sausage and chicken strips) as a fundraiser again this year. This is a great fundraiser as most of the county is familiar with the products. Proceeds will be divided between 4-H Council and the 4-H Clubs. Packets will be handed out to club leaders. All orders and money is due to the Extension Office by **March 3, 2025**. Delivery is expected the week of **March 17, 2025**. The exact date will be announced closer to that time.



# Franklin Festivities

## County Council

November 25, 7:00 p.m. @  
Commission Chambers, 1418 S.  
Main, in Ottawa (down the hall  
from the Extension Office)

|                                       |          |
|---------------------------------------|----------|
| Club Day                              | RR       |
| District Wide Day Camp                | BGG & AR |
| Livestock Buyer Appreciation          | SH       |
| National 4-H Week Marketing           | FOP & SS |
| Achievement Night Celebrations        | RW       |
| District Wide Event                   | PGB      |
| Community Service & Fair Goody Plates | AT       |

## Save the Date

Franklin County Fair;  
July 14-19, 2025

## Livestock Weigh-In & Tagging

Beef: **March 2nd, 2025**; 4-6 p.m. at Cottonwood Animal Hospital, 3161 K-68, in Ottawa. We will only have EID Tags this year.

Small Animal - **April 23th, 2025**; 4:00-6:00 p.m. at the Fair grounds, 220 W. 17th, in Ottawa. Small animal includes Swine, Sheep, and Goat. We will only be using EID Tags.

This year we only will be using ED tags for all animals. They will cost \$3.00 a tag, and you must pay for tags at weigh in. There will no longer be invoices, so please have exact change or check available at weigh-in.

## Jr. Medallions

At the annual Franklin County 4-H Achievement Celebration, medallions are awarded to junior and intermediate members showing excellence in a project through a PRRFs. Two awards were given in most project areas for the junior level and one in the intermediate level (a pin is awarded to the top PRRF). Medallions were sponsored by Adelle Higbie Family; Mara & Jax Drieling; S.H.A.F.F. 4-H club. Thank you for your support!

## Leadership Event

Come and expand your Leadership Skills! All Franklin County 4-H members and adults are encouraged to attend this Leadership Event. This will take the place of our **January 27th** Council Meeting. We will be serving a pizza dinner starting at 6:00 p.m., with the Leadership Program starting at 6:30 p.m. We should wrap up between 7:30 and 8 p.m. This is a great opportunity to work on Leadership skills with other 4-H members from around the county! Please RSVP by January **20th** [here](#). If you have any questions, please reach out to the office.

## Come pick up PRRF's and things

Any items not picked up at the Achievement Celebration are available from the club leader or are in the Extension Office. State Fair Items are as well, in the office if you haven't already picked up. Please remember, the office is closed Noon-1:00 p.m.

## Thank you to our sponsors!

Please send a thank you to our sponsors for their generous donations. Send a thank you to our T-Shirt sponsor, Patriots Bank, at 1508 US-59, Princeton, KS 66078

# FRANKLIN COUNTY

**JANUARY 27**

**2025**



## Leadership 101 Course

We are excited to be offering a leadership night in the Frontier Extension District on **January 27, 2025 from 6:00-7:30 pm**, where we will be focusing on practicing different leadership skills in the areas of character and teamwork. As Simon Sinek once said, 'Leadership is not about being in charge. It's about taking care of those in your charge.' A strong leader understands the importance of continuous skill-building. **All ages are encouraged to attend our event. A pizza dinner will be served.** If you plan to attend, please use the link or QR code below to RSVP by January 20, 2025. We hope to see you there!



**PLEASE  
RSVP BY  
JANUARY  
20TH, 2025**

OR

Franklin County Leadership Event



**It will be held at the Commissioners Chambers!**

# Handy Links!

Please follow the links for more information

## [4-H Policy](#)

The current KSRE and 4-H practices cover the new requirements and are now included as a reference in the policy.

## [Electronic Treasurers Book](#)

An electronic version of the Treasurer's Book is available for any club or group to use. Located at the bottom of page on the club resource's page!

## [Helpful Resources](#)

Here are some resources to help guide you in projects, or any national curriculum that might be helpful!

## [Raffle Policy and Guidelines](#)

Any Extension unit-affiliated group (e.g. 4-H club, 4-H project group, etc.) wanting to conduct a raffle must first fill out and submit an application.

## [Frontier District Website](#)

This is our website that holds lots of great information!

## [Frontier District Facebook](#)

Follow us on Facebook for updated information!

## [Kansas 4-H Website](#)

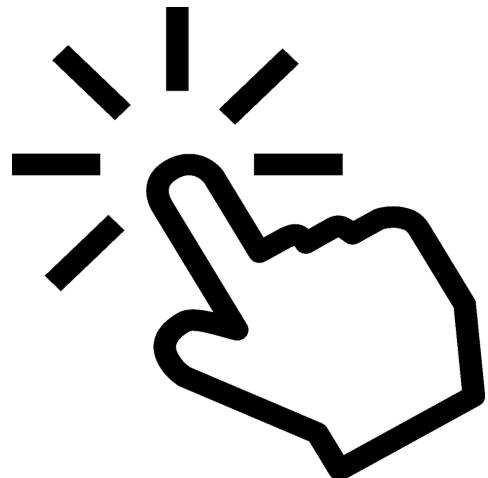
This is the Kansas 4-H website and is an excellent resource. Information about state events, project materials and the state 4-H newsletter is available.

## [District Wide Project Leaders](#)

A list of District-wide projects and leaders is available to Frontier District 4-H members.

## [Disabilities Accommodations Request Form](#)

The Americans with Disabilities Act (ADA) requires persons with disabilities be provided "reasonable" accommodations and prohibits discrimination against persons with disabilities. Accommodations are generally considered reasonable if they don't change the fundamental nature of the program or alter the essential criteria for participation. Accommodations meeting these standards should typically be provided. Reasonable accommodations are determined through an interactive process between the community member and local and State 4-H Offices. It is essential for the Accommodation Request Form to be filled out FIRST at the local level in collaboration with a local Extension Professional to launch a formal accommodations process. Because it can take time to plan for accommodations, KSRE requests this form be submitted no later than two weeks prior to the event/activity. Submitting a request on shorter notice may reduce and/or limit any ability to implement accommodations.



# Meet the Staff

**Rebecca McFarland**

District Director  
Family and Community Wellness  
Agent  
Ottawa Office  
785-229-3520  
[rmcfarla@ksu.edu](mailto:rmcfarla@ksu.edu)

**Janae McNally**

District Agent  
Adult Development and Aging  
and Family Resource Management  
Lyndon Office  
785-828-4438  
[jmcnally@ksu.edu](mailto:jmcnally@ksu.edu)

**Ryan Schaub**

District Agent  
Crop Production and Farm  
Management  
Garnett Office  
785-448-6826  
[reschaub@ksu.edu](mailto:reschaub@ksu.edu)

**Rod Schaub**

District Agent  
Livestock Production  
Lyndon Office  
785-828-4438  
[rschaub@ksu.edu](mailto:rschaub@ksu.edu)

**Chelsea Richmond**

District Agent  
Nutrition, Food Safety and Health  
Garnett Office  
785-448-6826  
[crichmon@ksu.edu](mailto:crichmon@ksu.edu)

**Lauren Gammill**

District Agent  
Horticulture and Natural Resources  
Ottawa Office  
785-229-3520  
[laurengammill@ksu.edu](mailto:laurengammill@ksu.edu)

**Jessica Flory**

District Agent  
4-H Youth Development  
Ottawa Office  
785-229-3520  
[jrflory@ksu.edu](mailto:jrflory@ksu.edu)

**Jo Hetrick-Anstaett**

4-H Program Manager  
Lyndon Office  
785-828-4438  
[janstaett@ksu.edu](mailto:janstaett@ksu.edu)

**Josie Medlen**

4-H Program Manager  
Ottawa Office  
785-229-3520  
[josie03@ksu.edu](mailto:josie03@ksu.edu)

**Jeanette Stinebaugh**

4-H Program Manager  
Garnett Office  
785-448-6826  
[jlstineb@ksu.edu](mailto:jlstineb@ksu.edu)

**Kierstyn Blaufuss**

Office Professional  
Ottawa Office  
785-229-3520  
[kierstynb@ksu.edu](mailto:kierstynb@ksu.edu)

**Liz Drennan**

Office Professional  
Garnett Office  
785-448-6826  
[edrennan@ksu.edu](mailto:edrennan@ksu.edu)

**Anita Sobba**

Nutrition Educator - Kansas SNAP-ED  
Program  
Garnett Office  
785-448-6826  
[anitasobba@ksu.edu](mailto:anitasobba@ksu.edu)

**Kris Wallace**

Nutrition Educator - SNAP-ED  
Ottawa Office  
785-229-3520  
[krwall@ksu.edu](mailto:krwall@ksu.edu)

**Janaya Reed**

Financial Manager and Office  
Professional  
Lyndon Office  
785-828-4438  
[jlhamlin@ksu.edu](mailto:jlhamlin@ksu.edu)

**Carol Engle**

Communications & Marketing  
Manager  
Ottawa Office  
785-229-3520  
[carolengle@ksu.edu](mailto:carolengle@ksu.edu)